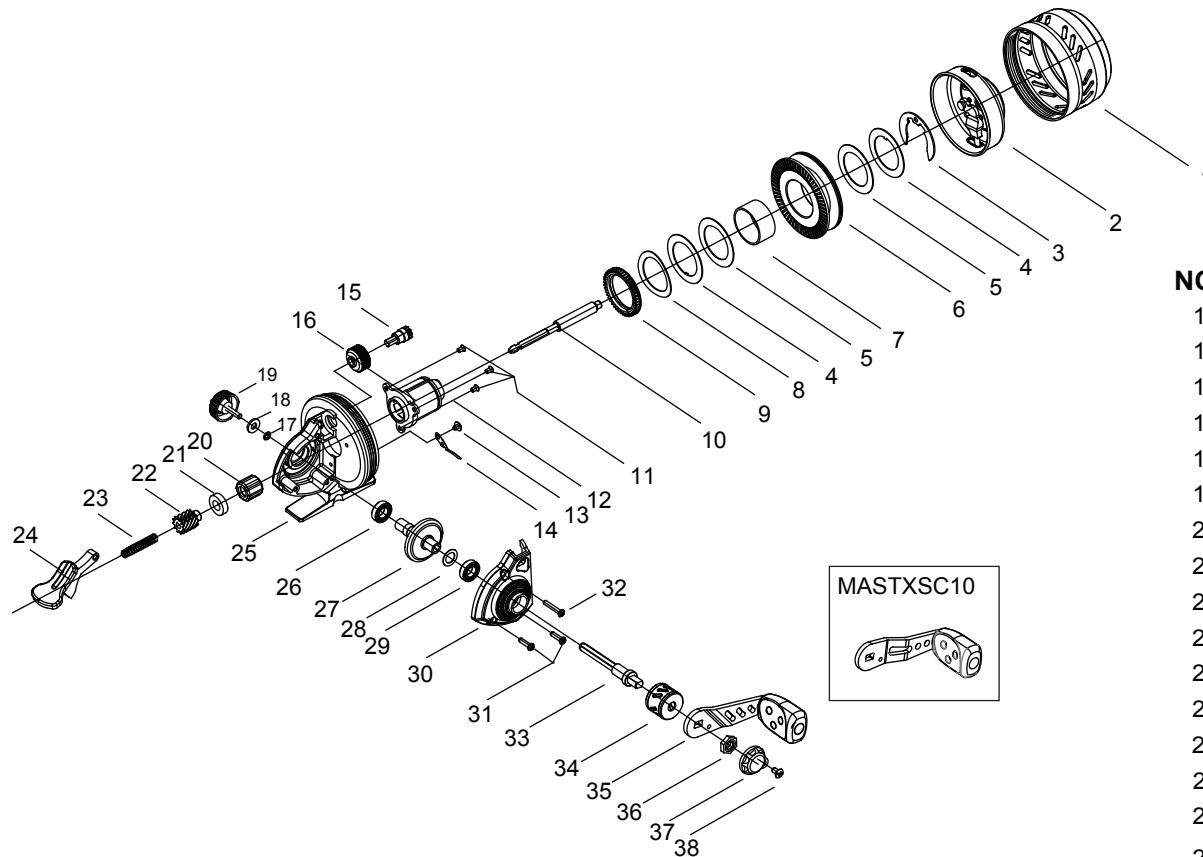




Model	MAXSTXSC10	MAXPROSC10
Bearings	3	4
Line Capacity	8 lb/110 yds 0.25mm/100M	8 lb/110 yds 0.25mm/100M
Anti-Reverse	IAR	IAR



NO.	PARTS DESCRIPTION	MAXSTXSC10	MAXPROSC10
14	SPOOL AUDIO CHIP	1379368	1379368
15	DRAG DRIVE GEAR	1379370	1379370
16	DRAG KNOB	1527526	1527516
17	O-RING	1527527	1527527
18	HANDLE NUT WASHER	1379373	1379373
19	HANDLE NUT	1527528	1527517
20	CLUTCH BB	1379374	1379374
21	PINION BALL BEARING	1379376	1379376
22	PINION GEAR	1379378	1379378
23	MAIN SHAFT SPRING	1527529	1527529
24	THUMB BUTTON	1527530	1527518
25	BODY	1527531	1527519
26	MAIN GEAR BUSHING	1379388	NA
26	MAIN GEAR BALL BEARING	NA	1379391
27	MAIN GEAR	1379389	1379389
28	MAIN GEAR WASHER	1379390	1379390
29	MAIN GEAR BALL BEARING	1379391	1379391
30	SIDE COVER	1527532	1527520
31	SIDE COVER SCREW	1379394	1379405
32	THUMB BUTTON SCREW	1379393	1379393
33	HANDLE COLLAR	1527533	1527533
34	HANDLE SHIELD	1527534	1527521
35	HANDLE ASSY	1527535	1527522
36	HEX NUT	1527536	1527536
37	HANDLE NUT COVER	1527537	1527537
38	HANDLE NUT COVER SCREW	1527538	1527538

NO.	PARTS DESCRIPTION	MAXSTXSC10	MAXPROSC10
1	CONE ASSY	1527523	1527512
2	ROTOR ASSY	1527524	1527513
3	SPOOL CLIP	1379360	1379360
4	DRAG HORNED WASHER	1379361	1379361
5	DRAG WASHER	1379362	1379362
6	SPOOL	1379363	1379398
7	SPOOL BUSHING	NA	1379399
8	DRAG ELASTIC WASHER	1379364	1379364
9	DRAG GEAR	1379365	1379365
10	MAIN SHAFT	1527525	1527525
11	BODY SLEEVE SCREW	NA	1527515
12	BODY SLEEVE	NA	1527514
13	SPOOL AUDIO CHIP SCREW	1379367	1379400