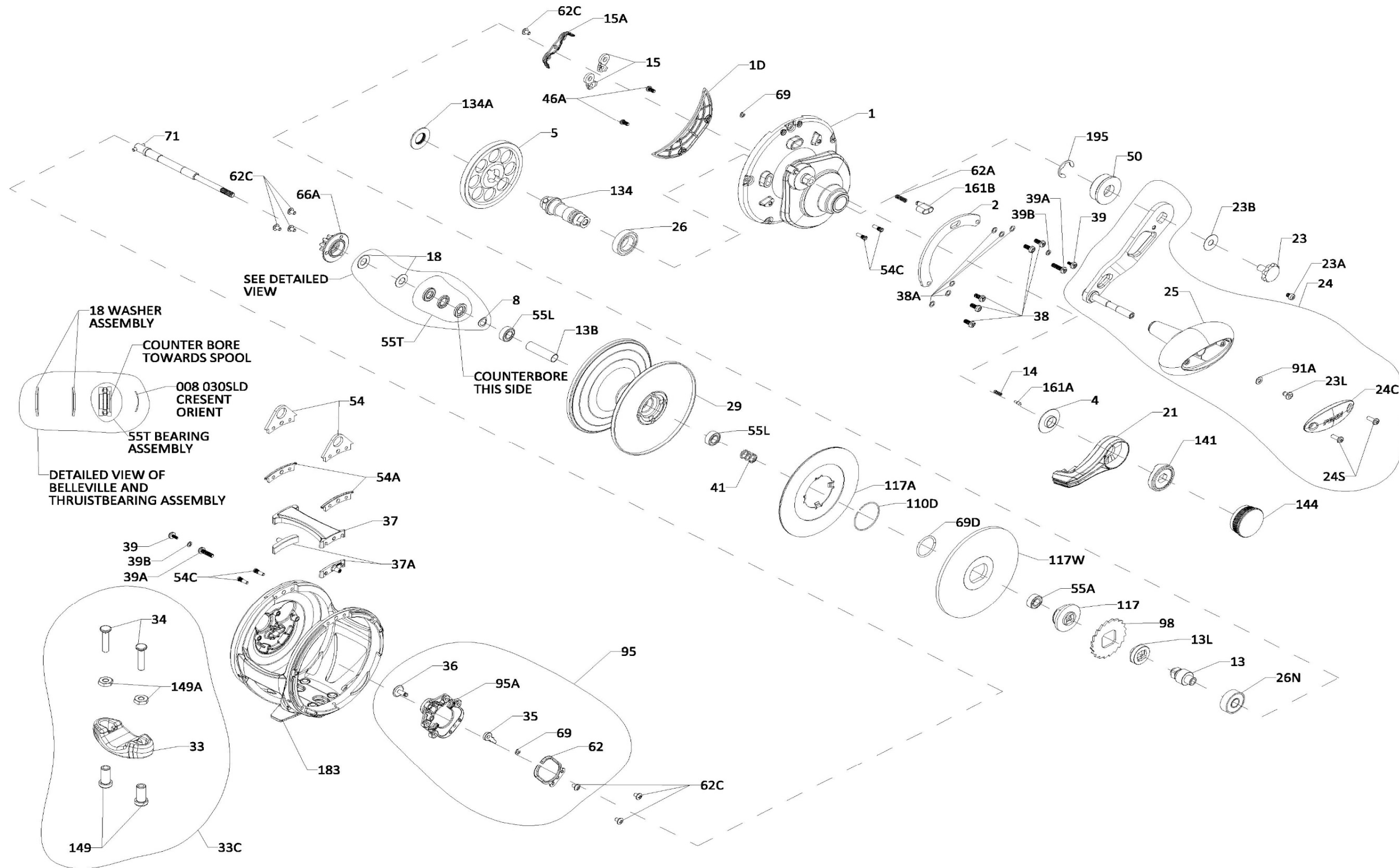




PARTS LIST FOR MODEL
FATHOM II 15XNLD2LH, 25NLD2LH, 30LD2LH
REEL PART NO. 1563177, 1563179, 1563181





PARTS LIST FOR MODEL
 FATHOM II 15XNLD2LH, 25NLD2LH, 30LD2LH
 REEL PART NO. 1563177, 1563179, 1563181

Key No.	Part No.	Penn Style No.	Description Parts List	Key No.	Part No.	Penn Style No.	Description Parts List	Key No.	Part No.	Penn Style No.	Description Parts List
1	1580136	1-FTHII15XNLD2LH	Left Side Plate (15XN)	29	1580211	29-FTHII15XNLD2	Spool (15XN)	98	1265073	98-FTH40NLD2	Ratchet
1	1580159	1-FTHII25NLD2LH	Left Side Plate (25N)	29	1580212	29-FTHII25NLD2	Spool (25N)	110A	1580239	110A-FTHIILD2	Shift Button Base
1	1580162	1-FTHII30LD2LH	Left Side Plate (30)	29	1580213	29-FTHII30LD2	Spool (30)	110B	1580240	110B-FTHIILD2	Shift Button Body
1D	1580170	1D-FTHII25NLD2	Gearbox Cover	33	1580217	33-FTHII15XNLD2	Rod Clamp (15XN)	110C	1580241	110C-FTHIILD2	Shift Button Retain Ring
2	1580174	2-FTHII25NLD2	Quadrant	33	1290729	33-TRQ	Rod Clamp (25N, 30)	110D	1309895	110D-FTH15LD2	Retaining Ring
4	1264978	4-TRQ15LD2	Lever Washer	33C	1580219	33C-FTHII15XNLD2	Rod Clamp Kit (15XN)	110E	1580242	110E-FTHIILD2	Screw (2 req)
5H	1408162	5-FTH25NLD2LHHS	Main Gear High Speed	33C	1580218	33C-FTHIILD2	Rod Clamp Kit (25N, 30)	117	1309896	117-FTH15LD2	Drive Plate
5L	1408161	5-FTH25NLD2LHLS	Main Gear Low Speed	34	1501007	34-TRQ15XNLD2	Screw, Rod Clamp (15XN) (2 req)	117A	1309898	117A-FTH25NLD2	Drag Washer (Assembly)
8	1257843	8-30SLD	Spring Washer	34	1580220	34-FTHIILD2	Screw, Rod Clamp (25N, 30) (2 req)	117W	1309901	117W-FTH25NLD2	Drag Washer Metal
13B	1541515	13B-FTH15XNLD2	Spacer Tube (15XN)	35	1188656	35-20	Click Tongue	128	1265084	128-30SLD2	Shift Key
13B	1309867	13B-FTH25NLD2	Spacer Tube (25N)	36	1516151	36-FTHII15SD	Click Button	134	1265085	134-30SLD2	Gear Stud
13B	1309868	13B-FTH30LD2	Spacer Tube (30)	38	1309885	38-FTH15LD	Screw (6 req)	134A	1265086	134A-30SLD2	Nut Gear Stud
13H	1408164	13-FTH25NLD2LHHS	Pinion High Speed	38A	1188649	38A-20	Flat Washer (6 req)	134B	1265087	134B-30SLD2	Washer Support Gear Stud
13L	1408163	13-FTH25LD2LHLS	Pinion Low Speed	41	1265056	41-TRQ40NLD2	Drag Disengaging Spring	141	1580246	141-FTHIILD	Cam Follower
14	1181406	14-535	Spring	46A	1488755	46A-FTHII30LW	Cover Plate Screw (2 req)	144	1580247	144-FTHIILD	Preset Knob Assembly
15	1229374	15-TRQ40	Dog Asm (2 req)	50	1309888	50-FTH30LD2	Shield Guard	149	1230616	149-TRQ15	Rod Clamp Nut (15XN) (2 req)
15A	1580194	15A-FTHIILD	Anti Rev Dog Retainer	55A	1238912	55A-50SLD	Ball Bearing	149	1184702	149-45	Rod Clamp Nut (25N, 30) (2 req)
18	1265001	18-TRQ40NLD2	Spring Washer (2 req)	55L	1286985	55L-20	Ball Bearing (2 req)	149A	1184706	149-200	Hex Nut (25N, 30) (2 req)
18C	1181632	18C-15KG	Spring Shift Button	55T	1238913	55T-30SLD	Thrust Bearing	154	1265092	154-TRQ40NLD2	Gear Stud Shim (As Required)
18H	1265002	18H-30SLD2	Spring	62	1188664	62-20	Click Spring	154A	1306668	154A-TRQ40NLD2	Gear Stud Shim (As Required)
18L	1265003	18L-30SLD2	Spring	62A	1236596	62-TRQ40	Spring Click Locator	154B	1309904	154B-FTH40NLD2	Belleville Distance Washer
21	1580197	21-FTHII30LD2LH	Drag Lever (LH)	62C	1188654	62C-20	Screw (7 req)	154B	1309903	154B-FTH25NLD2	Belleville Distance Washer
23	1580203	23-FTHIILD2	Screw Handle Nut	66A	1265059	66A-FTHLD	Click Gear	161A	1265098	161A-TRQ15LD2	Lever Click Pin
23L	1191283	23L-750	Screw	69	1188657	69-20	Retainer (2 req)	161B	1265099	161B-TRQ40NLD2	Strike Button
23W	1286986	23W-TRQ40NLD2	Handle Nut Washer	69D	1265060	69D-FTH15LD	Retaining Ring	171	1265101	171-30SLD2	Plunger Gear Shift
24	1580206	24-FTHII80LD2	Handle Assembly	71	1580231	71-FTHII15XNLD2	Spindle (15XN)	172	1580248	172-FTHIILD2	Shift Button Assembly
24C	1361267	24C-16VIS	Cap- Handle Knob	71	1580232	71-FTHII25NLD2	Spindle (25N)	172B	1580249	172B-FTHIILD2	Shift Latch
24S	1580207	24S-FTHII80LD2	Screw (2 req)	71	1580233	71-FTHII30LD2	Spindle (30)	172C	1184831	172B-30VS	Spacer
25	1580208	25-FTHII80LD2	Handle Knob	82	1265070	82-TRQ40NLD2	Washer Teflon (2 req)	183	1580254	183-FTHII15XNLD2LH	Frame Assembly (15XN)
26	1265023	26-TRQ40NLD2	Bearing	82A	1265071	82A-30SLD2	Washer Gear Separating	183	1580256	183-FTHII25NLD2LH	Frame Assembly (25N)
26N	1182145	26N-25	Bearing	91A	1277514	91A-TRQ40NLD2	Handle Knob Washer	183	1580258	183-FTHII30LD2LH	Frame Assembly (30)
				95	1580237	95-FTHIILD2	Click Module Assembly	195	1184955	195-40	Retaining Ring (2 req)
				95A	1580238	95A-FTHIILD2	Click Module Housing				



Thank you for your recent PENN gear purchase. No matter where you fish or what you fish for, you can depend PENN to perform in any battle day in and day out. Now it's time to get your product registered and get out on the water.

<https://register.pennfishing.com>