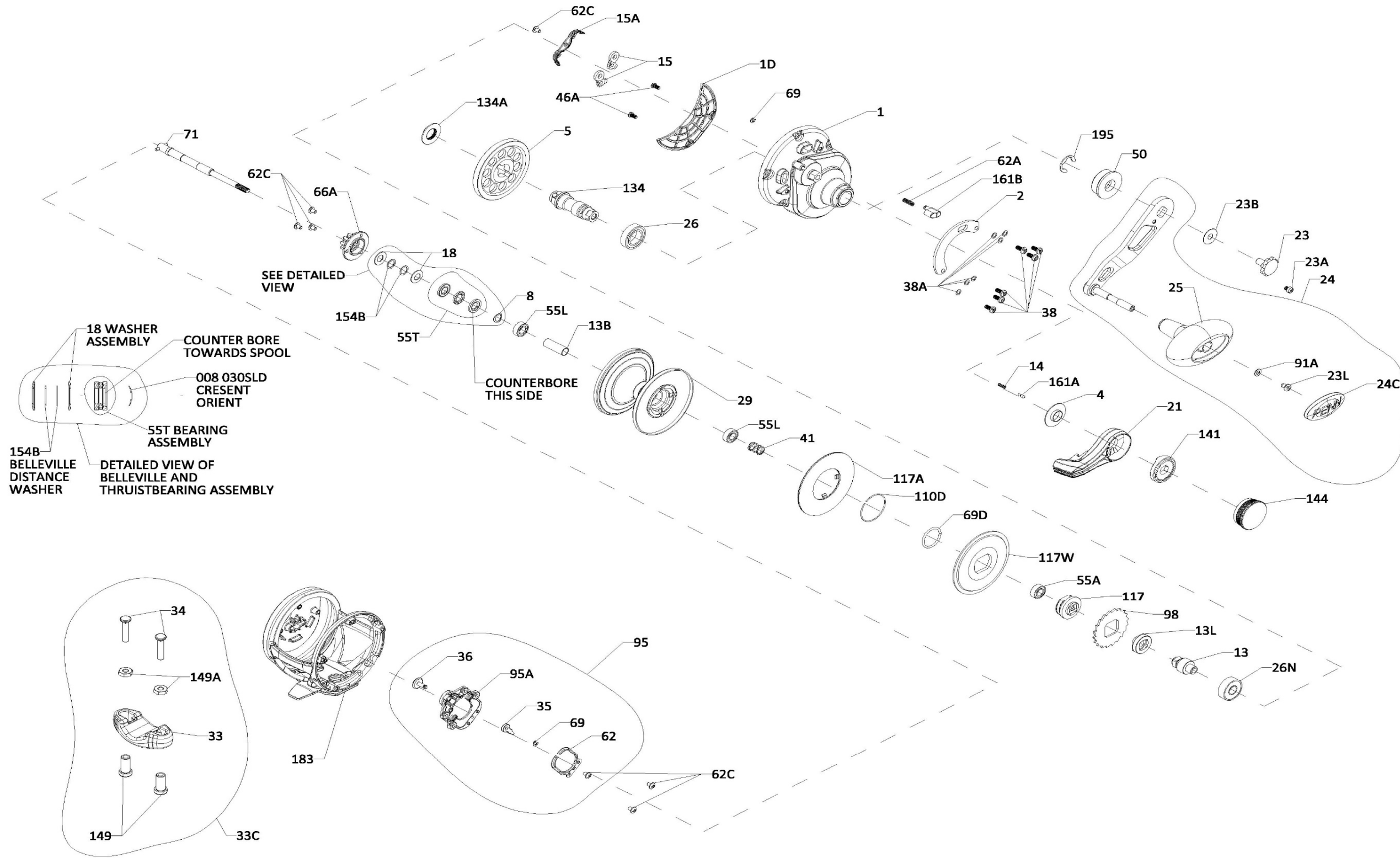




PARTS LIST FOR MODEL
FATHOM II 25NLD, 30LD
REEL PART NO. 1563378, 1563379





PARTS LIST FOR MODEL
 FATHOM II 25NLD, 30LD
 REEL PART NO. 1563378, 1563379

Key No.	Part No.	Penn Style No.	Description Parts List	Key No.	Part No.	Penn Style No.	Description Parts List	Key No.	Part No.	Penn Style No.	Description Parts List
1	1580137	1-FTHII25NLD	Right Side Plate (25N)	29	1580212	29-FTHII25NLD2	Spool (25N)	91A	1277514	91A-TRQ40NLD2	Handle Knob Washer
1	1580160	1-FTHII30LD	Right Side Plate (30)	29	1580213	29-FTHII30LD2	Spool (30)	95	1580237	95-FTHIILD2	Click Module Assembly
1D	1580170	1D-FTHII25NLD2	Gearbox Cover	33	1290729	33-TRQ	Rod Clamp	95A	1580238	95A-FTHIILD2	Click Module Housing
2	1580174	2-FTHII25NLD2	Quadrant	33C	1580218	33C-FTHIILD2	Rod Clamp Kit	98	1265073	98-FTH40NLD2	Ratchet
4	1264978	4-TRQ15LD2	Lever Washer	34	1580220	34-FTHIILD2	Screw, Rod Clamp (2 req)	110D	1309895	110D-FTH15LD2	Retaining Ring
5	1338139	5-FTH30LD	Main Gear	35	1188656	35-20	Click Tongue	117	1309896	117-FTH15LD2	Drive Plate
8	1257843	8-30SLD	Spring Washer	36	1516151	36-FTHII15SD	Click Button	117A	1309898	117A-FTH25NLD2	Drag Washer (Assembly)
13	1338143	13-FTH30LD	Pinion	38	1309885	38-FTH15LD	Screw (6 req)	117W	1309901	117W-FTH25NLD2	Drag Washer Metal
13B	1309867	13B-FTH25NLD2	Spacer Tube (25N)	38A	1188649	38A-20	Flat Washer (6 req)	134	1338160	134-FTH40NLD	Gear Stud
13B	1309868	13B-FTH30LD2	Spacer Tube (30)	41	1265056	41-TRQ40NLD2	Drag Disengaging Spring	134A	1265086	134A-30SLD2	Nut Gear Stud
13L	1338146	13L-FTH40NLD	Spacer	46A	1488755	46A-FTHII30LW	Cover Plate Screw (2 req)	141	1580246	141-FTHIILD	Cam Follower
14	1181406	14-535	Spring	50	1309888	50-FTH30LD2	Shield Guard	144	1580247	144-FTHIILD	Preset Knob Assembly
15	1229374	15-TRQ40	Dog Asm (2 req)	55A	1238912	55A-50SLD	Ball Bearing	149	1184702	149-45	Rod Clamp Nut (2 req)
15A	1580194	15A-FTHIILD	Anti Rev Dog Retainer	55L	1286985	55L-20	Ball Bearing (2 req)	149A	1184706	149-200	Hex Nut (2 req)
18	1265001	18-TRQ40NLD2	Spring Washer (2 req)	55T	1238913	55T-30SLD	Thrust Bearing	154B	1309904	154B-FTH40NLD2	Belleville Distance Washer
21	1580196	21-FTHII30LD2	Drag Lever	62	1188664	62-20	Click Spring	154B	1309903	154B-FTH25NLD2	Belleville Distance Washer
23	1589722	23-FTHIILD	Handle Screw (Black)	62A	1236596	62-TRQ40	Spring Click Locator	161A	1265098	161A-TRQ15LD2	Lever Click Pin
23A	1589723	23A-FTHIILD	Handle Lock Screw (Black)	62C	1188654	62C-20	Screw (7 req)	161B	1265099	161B-TRQ40NLD2	Strike Button
23B	1207784	23B-20	Handle Screw Washer	66A	1265059	66A-FTHLD	Click Gear	183	1580255	183-FTHII25NLD2	Frame Assembly (25N)
23L	1191283	23L-750	Screw	69	1188657	69-20	Retainer (2 req)	183	1580257	183-FTHII30LD2	Frame Assembly (30)
24C	1191335	24C-66	Cap- Handle Knob	69D	1265060	69D-FTH15LD	Retaining Ring	195	1184955	195-40	Retaining Ring
25	1240293	25-TRQ40	Handle Knob	71	1580232	71-FTHII25NLD2	Spindle (25N)				
26	1265023	26-TRQ40NLD2	Bearing	71	1580233	71-FTHII30LD2	Spindle (30)				
26N	1182145	26N-25	Bearing								



Thank you for your recent PENN gear purchase. No matter where you fish or what you fish for, you can depend PENN to perform in any battle day in and day out. Now it's time to get your product registered and get out on the water.

<https://register.pennfishing.com>