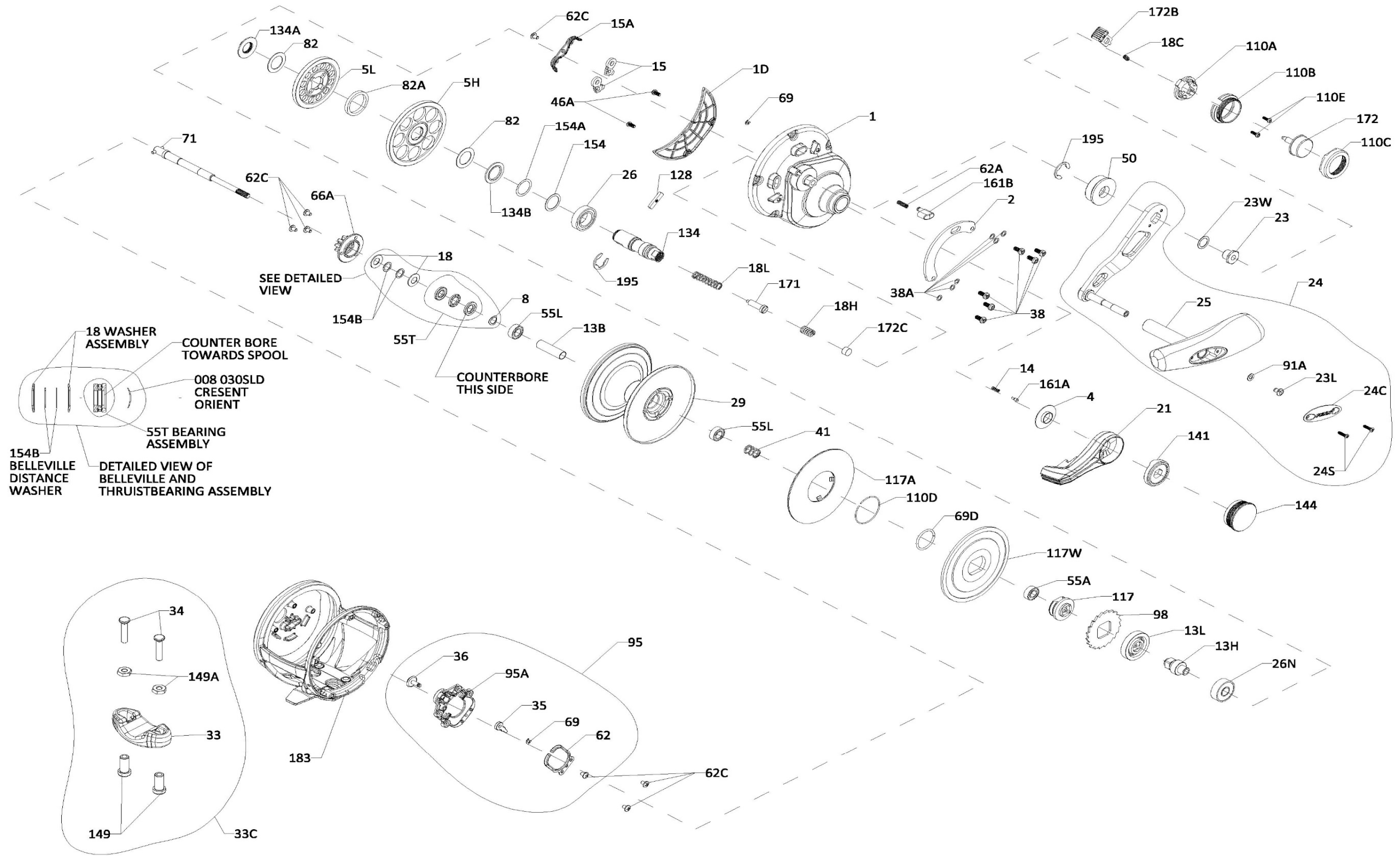




PARTS LIST FOR MODEL
FATHOM II 40NLD2
REEL PART NO. 1563182





PARTS LIST FOR MODEL
FATHOM II 40NLD2
REEL PART NO. 1563182

| Key No. | Part No. | Penn Style No. | Description Parts List | Key No. | Part No. | Penn Style No. | Description Parts List | Key No. | Part No. | Penn Style No. | Description Parts List |
|---------|----------|------------------|------------------------|---------|----------|----------------|---------------------------|---------|----------|-----------------|------------------------------------|
| 1 | 1580163 | 1-FTHII40NLD2 | Right Side Plate | 29 | 1580214 | 29-FTHII40NLD2 | Spool | 110A | 1580239 | 110A-FTHIILD2 | Shift Button Base |
| 1D | 1580171 | 1D-FTHII40NLD2 | Gearbox Cover | 33 | 1290729 | 33-TRQ | Rod Clamp | 110B | 1580240 | 110B-FTHIILD2 | Shift Button Body |
| 2 | 1580175 | 2-FTHII40NLD2 | Quadrant | 33C | 1580218 | 33C-FTHIILD2 | Rod Clamp Kit | 110C | 1580241 | 110C-FTHIILD2 | Shift Button Retain Ring |
| 4 | 1264978 | 4-TRQ15LD2 | Lever Washer | 34 | 1580220 | 34-FTHIILD2 | Screw, Rod Clamp (2 req) | 110D | 1309895 | 110D-FTH15LD2 | Retaining Ring |
| 5H | 1580178 | 5-FTHII40NLD2HS | Main Gear High Speed | 35 | 1188656 | 35-20 | Click Tongue | 110E | 1580242 | 110E-FTHIILD2 | Screw (2 req) |
| 5L | 1580181 | 5-FTHII40NLD2LS | Main Gear Low Speed | 36 | 1516151 | 36-FTHII15SD | Click Button | 117 | 1309896 | 117-FTH15LD2 | Drive Plate |
| 8 | 1257843 | 8-30SLD | Spring Washer | 38 | 1309885 | 38-FTH15LD | Screw (6 req) | 117A | 1309899 | 117A-FTH40NLD2 | Drag Washer (Assembly) |
| 13B | 1309869 | 13B-FTH40NLD2 | Spacer Tube | 38A | 1188649 | 38A-20 | Flat Washer (6 req) | 117W | 1309902 | 117W-FTH40NLD2 | Drag Washer Metal |
| 13H | 1580188 | 13-FTHII40NLD2HS | Pinion High Speed | 41 | 1265056 | 41-TRQ40NLD2 | Drag Disengaging Spring | 128 | 1265084 | 128-30SLD2 | Shift Key |
| 13L | 1580191 | 13-FTHII40NLD2LS | Pinion Low Speed | 46A | 1488755 | 46A-FTHII30LW | Cover Plate Screw (2 req) | 134 | 1265085 | 134-30SLD2 | Gear Stud |
| 14 | 1181406 | 14-535 | Spring | 50 | 1309889 | 50-FTH60LD2 | Shield Guard | 134A | 1265086 | 134A-30SLD2 | Nut Gear Stud |
| 15 | 1229374 | 15-TRQ40 | Dog Asm (2 req) | 55A | 1238912 | 55A-50SLD | Ball Bearing | 134B | 1265087 | 134B-30SLD2 | Washer Support Gear Stud |
| 15A | 1580194 | 15A-FTHIILD | Anti Rev Dog Retainer | 55L | 1286985 | 55L-20 | Ball Bearing (2 req) | 141 | 1580246 | 141-FTHIILD | Cam Follower |
| 18 | 1265001 | 18-TRQ40NLD2 | Spring Washer (2 req) | 55T | 1238913 | 55T-30SLD | Thrust Bearing | 144 | 1580247 | 144-FTHIILD | Preset Knob Assembly |
| 18C | 1181632 | 18C-15KG | Spring Shift Button | 62 | 1188664 | 62-20 | Click Spring | 149 | 1184702 | 149-45 | Rod Clamp Nut (2 req) |
| 18H | 1265002 | 18H-30SLD2 | Spring | 62A | 1236596 | 62-TRQ40 | Spring Click Locator | 149A | 1184706 | 149-200 | Hex Nut (2 req) |
| 18L | 1265003 | 18L-30SLD2 | Spring | 62C | 1188654 | 62C-20 | Screw (7 req) | 154 | 1265092 | 154-TRQ40NLD2 | Gear Stud Shim (As Required) |
| 21 | 1580198 | 21-FTHII40NLD2 | Drag Lever | 66A | 1265059 | 66A-FTHLD | Click Gear | 154A | 1306668 | 154A-TRQ40NLD2 | Gear Stud Shim (As Required) |
| 23 | 1580203 | 23-FTHIILD2 | Screw Handle Nut | 69 | 1188657 | 69-20 | Retainer (2 req) | 154B | 1309903 | 154B-FTH25NLD2 | Belleville Distance Washer (2 req) |
| 23L | 1191283 | 23L-750 | Screw | 69D | 1265060 | 69D-FTH15LD | Retaining Ring | 161A | 1265098 | 161A-TRQ15LD2 | Lever Click Pin |
| 23W | 1286986 | 23W-TRQ40NLD2 | Handle Nut Washer | 71 | 1580234 | 71-FTHII40NLD2 | Spindle | 161B | 1265099 | 161B-TRQ40NLD2 | Strike Button |
| 24 | 1580206 | 24-FTHII80LD2 | Handle Assembly | 82 | 1265070 | 82-TRQ40NLD2 | Washer Teflon (2 req) | 171 | 1265101 | 171-30SLD2 | Plunger Gear Shift |
| 24C | 1361267 | 24C-16VIS | Cap- Handle Knob | 82A | 1265071 | 82A-30SLD2 | Washer Gear Separating | 172 | 1580248 | 172-FTHIILD2 | Shift Button Assembly |
| 24S | 1580207 | 24S-FTHII80LD2 | Screw (2 req) | 91A | 1277514 | 91A-TRQ40NLD2 | Handle Knob Washer | 172B | 1580249 | 172B-FTHIILD2 | Shift Latch |
| 25 | 1580208 | 25-FTHII80LD2 | Handle Knob | 95 | 1580237 | 95-FTHIILD2 | Click Module Assembly | 172C | 1184831 | 172B-30VS | Spacer |
| 26 | 1265023 | 26-TRQ40NLD2 | Bearing | 95A | 1580238 | 95A-FTHIILD2 | Click Module Housing | 183 | 1580259 | 183-FTHII40NLD2 | Frame Assembly |
| 26N | 1182145 | 26N-25 | Bearing | 98 | 1265073 | 98-FTH40NLD2 | Ratchet | 195 | 1184955 | 195-40 | Retaining Ring (2 req) |



Thank you for your recent PENN gear purchase. No matter where you fish or what you fish for, you can depend PENN to perform in any battle day in and day out. Now it's time to get your product registered and get out on the water.

<https://register.pennfishing.com>