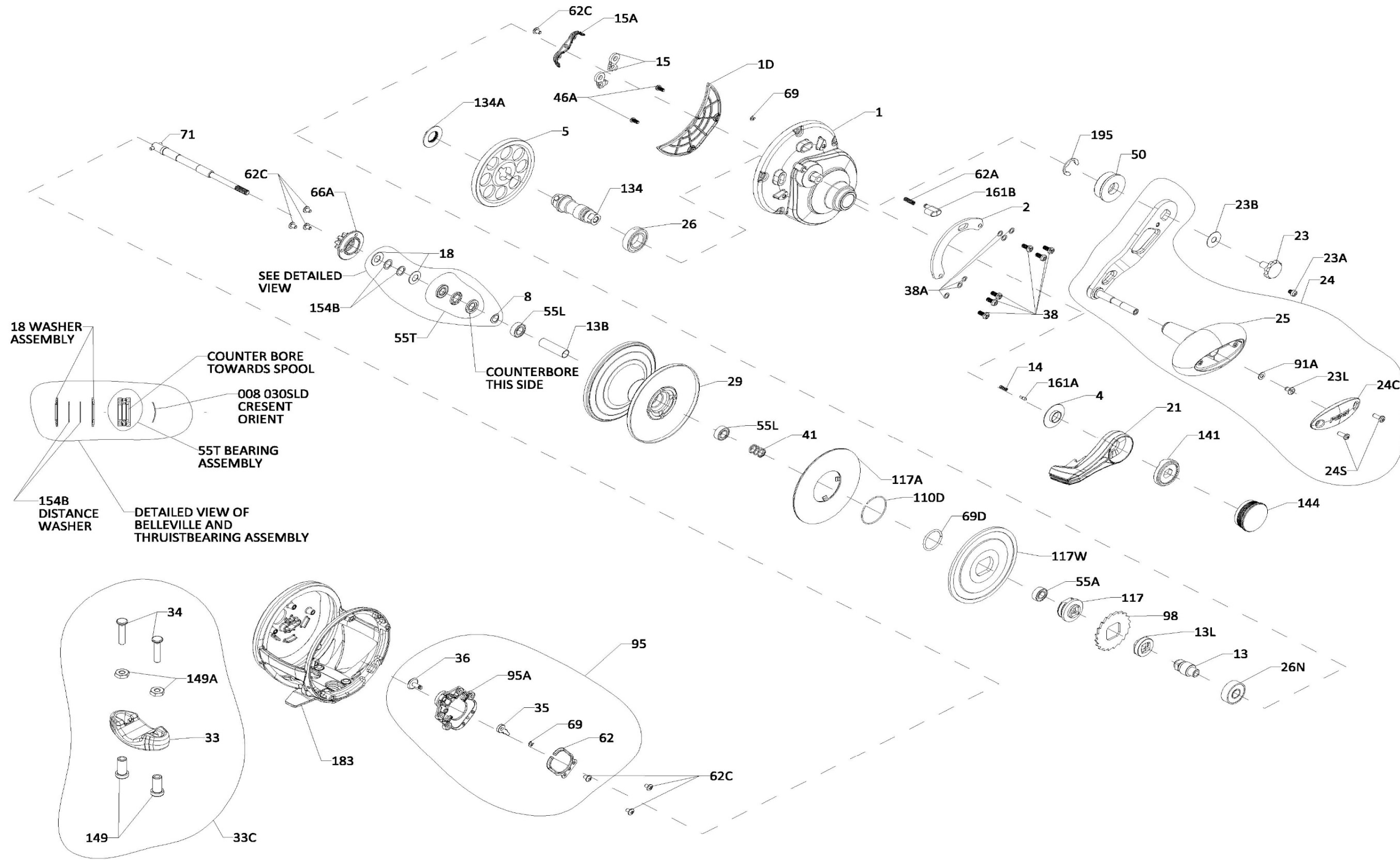




PARTS LIST FOR MODEL  
FATHOM II 40NLD, 40NLDHS  
REEL PART NO. 1578244, 1563380





PARTS LIST FOR MODEL  
 FATHOM II 40NLD, 40NLDHS  
 REEL PART NO. 1578244, 1563380

Key No.	Part No.	Penn Style No.	Description Parts List	Key No.	Part No.	Penn Style No.	Description Parts List	Key No.	Part No.	Penn Style No.	Description Parts List
1	1580535	1-FTHII40NLD	Right Side Plate (40NLD)	24	1580205	24-FTHIILD	Handle Assembly	66A	1265059	66A-FTHLD	Click Gear
1	1580165	1-FTHII40NLDHS	Right Side Plate (40NLDHS)	24C	1286717	24C-SQL50LW	Cap- Handle Knob	69	1188657	69-20	Retainer (2 req)
1D	1580171	1D-FTHII40NLD2	Gearbox Cover	24S	1265021	24S-TRQ40NLD2	Screw (2 req)	69D	1265060	69D-FTH15LD	Retaining Ring
2	1580175	2-FTHII40NLD2	Quadrant	25	1286716	25-SQL50	Handle knob	71	1580234	71-FTHII40NLD2	Spindle
4	1264978	4-TRQ15LD2	Lever Washer	26	1265023	26-TRQ40NLD2	Bearing	91A	1277514	91A-TRQ40NLD2	Handle Knob Washer
5	1338140	5-FTH40NLD	Main Gear (40NLD)	26N	1182145	26N-25	Bearing	95	1580237	95-FTHIILD2	Click Module Assembly
5	1338141	5-FTH40NLDHS	Main Gear (40NLDHS)	29	1580214	29-FTHII40NLD2	Spool	95A	1580238	95A-FTHIILD2	Click Module Housing
8	1257843	8-30SLD	Spring Washer	33	1290729	33-TRQ	Rod Clamp	98	1265073	98-FTH40NLD2	Ratchet
13	1338144	13-FTH40NLD	Pinion (40NLD)	33C	1580218	33C-FTHIILD2	Rod Clamp Kit	110D	1309895	110D-FTH15LD2	Retaining Ring
13	1338145	13-FTH40NLDHS	Pinion (40NLDHS)	34	1580220	34-FTHIILD2	Screw, Rod Clamp (2 req)	117	1309896	117-FTH15LD2	Drive Plate
13B	1309869	13B-FTH40NLD2	Spacer Tube	35	1188656	35-20	Click Tongue	117A	1309899	117A-FTH40NLD2	Drag Washer (Assembly)
13L	1338146	13L-FTH40NLD	Spacer	36	1516151	36-FTHII15SD	Click Button	117W	1309902	117W-FTH40NLD2	Drag Washer Metal
14	1181406	14-535	Spring	38	1309885	38-FTH15LD	Screw (6 req)	134	1338160	134-FTH40NLD	Gear Stud
15	1229374	15-TRQ40	Dog Asm (2 req)	38A	1188649	38A-20	Flat Washer (6 req)	134A	1265086	134A-30SLD2	Nut Gear Stud
15A	1580194	15A-FTHIILD	Anti Rev Dog Retainer	41	1265056	41-TRQ40NLD2	Drag Disengaging Spring	141	1580246	141-FTHIILD	Cam Follower
18	1265001	18-TRQ40NLD2	Spring Washer (2 req)	46A	1488755	46A-FTHII30LW	Cover Plate Screw (2 req)	144	1580247	144-FTHIILD	Preset Knob Assembly
21	1580198	21-FTHII40NLD2	Drag Lever (40NLD)	50	1309889	50-FTH60LD2	Shield Guard	149	1184702	149-45	Rod Clamp Nut (2 req)
21	1580200	21-FTHII40NLDHS	Drag Lever (40NLDHS)	55A	1238912	55A-50SLD	Ball Bearing	149A	1184706	149-200	Hex Nut (2 req)
23	1589722	23-FTHIILD	Handle Screw (Black)	55L	1286985	55L-20	Ball Bearing (2 req)	154B	1309903	154B-FTH25NLD2	Distance Washer (40NLD) (2 req)
23A	1589723	23A-FTHIILD	Handle Lock Screw (Black)	55T	1238913	55T-30SLD	Thrust Bearing	161A	1265098	161A-TRQ15LD2	Lever Click Pin
23B	1207784	23B-20	Handle Screw Washer	62	1188664	62-20	Click Spring	161B	1265099	161B-TRQ40NLD2	Strike Button
23L	1191283	23L-750	Screw	62A	1236596	62-TRQ40	Spring Click Locator	183	1580259	183-FTHII40NLD2	Frame Assembly (40N)
				62C	1188654	62C-20	Screw (7 req)	183	1580261	183-FTHII40NLDHS	Frame Assembly (40NLDHS)
								195	1184955	195-40	Retaining Ring



Thank you for your recent PENN gear purchase. No matter where you fish or what you fish for, you can depend PENN to perform in any battle day in and day out. Now it's time to get your product registered and get out on the water.

<https://register.pennfishing.com>