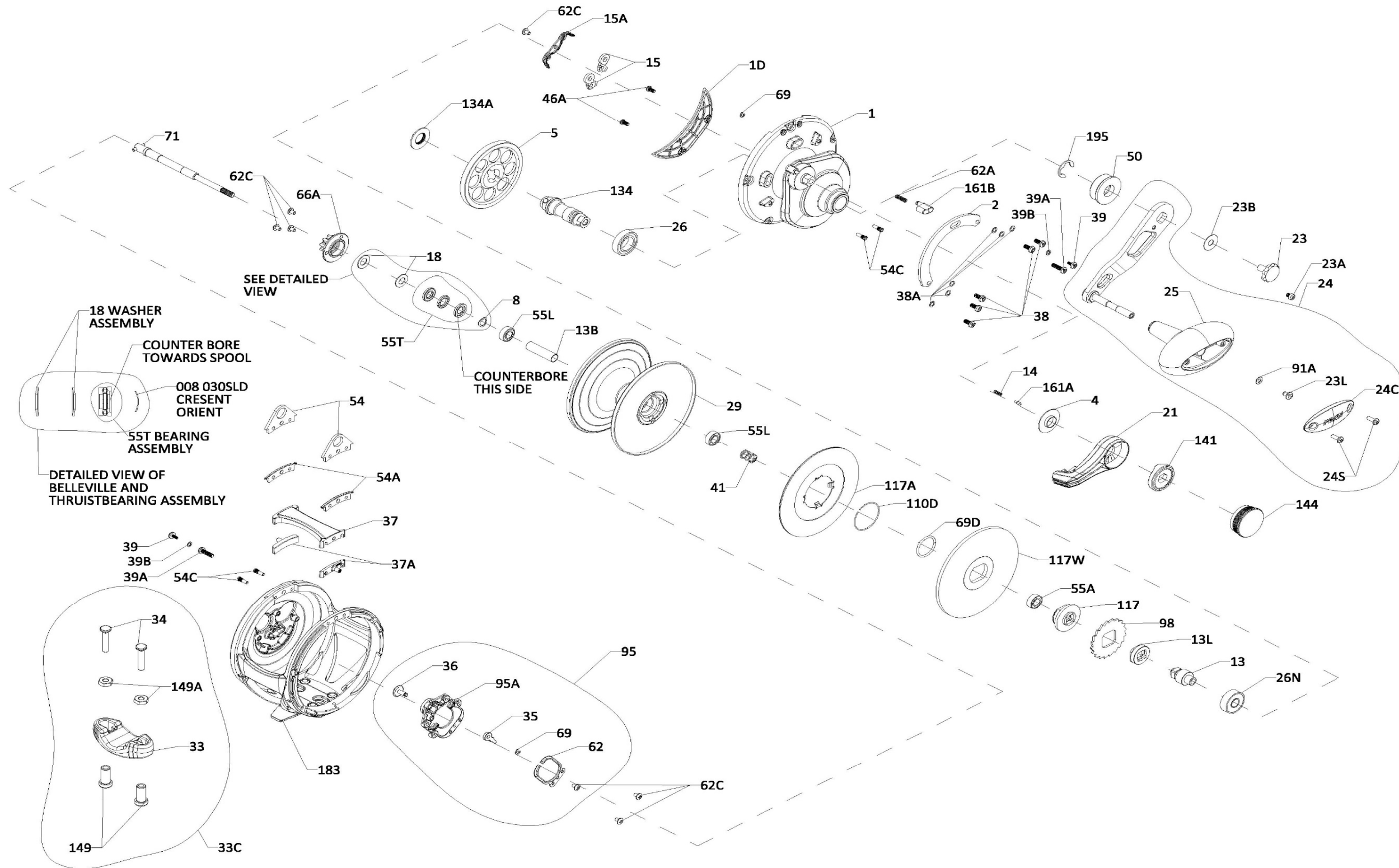




PARTS LIST FOR MODEL
FATHOM II 60NLDHS
REEL PART NO. 1563381





PARTS LIST FOR MODEL
FATHOM II 60NLDHS
REEL PART NO. 1563381

Key No.	Part No.	Penn Style No.	Description Parts List	Key No.	Part No.	Penn Style No.	Description Parts List	Key No.	Part No.	Penn Style No.	Description Parts List
1	1580167	1-FTHII60NLDHS	Right Side Plate	29	1580215	29-FTHII60NLD2	Spool (60N)	66A	1265059	66A-FTHLD	Click Gear
1D	1580172	1D-FTHII80LD2	Gearbox Cover	33	1290729	33-TRQ	Rod Clamp	69	1188657	69-20	Retainer (2 req)
2	1580176	2-FTHII80LD2	Quadrant	33C	1580218	33C-FTHIILD2	Rod Clamp Kit	69D	1265060	69D-FTH15LD	Retaining Ring
4	1264978	4-TRQ15LD2	Lever Washer	34	1580220	34-FTHIILD2	Screw, Rod Clamp (2 req)	71	1580235	71-FTHII60NLD2	Spindle
5	1580177	5-FTHII60NLDHS	Main Gear	35	1188656	35-20	Click Tongue	91A	1277514	91A-TRQ40NLD2	Handle Knob Washer
8	1257843	8-30SLD	Spring Washer	36	1516151	36-FTHII15SD	Click Button	95	1580237	95-FTHIILD2	Click Module Assembly
13	1580184	13-FTHII60NLDHS	Pinion	37	1580221	37-FTHII60NLD2	Top Crossbar	95A	1580238	95A-FTHIILD2	Click Module Housing
13B	1264997	13B-TRQ15LD2	Spacer Tube	37A	1580223	37A-FTHII60NLD2	Harness Lug Nut (2 req)	98	1265073	98-FTH40NLD2	Ratchet
13L	1338146	13L-FTH40NLD	Spacer	38	1309885	38-FTH15LD	Screw (5 req)	110D	1309895	110D-FTH15LD2	Retaining Ring
14	1181406	14-535	Spring	38A	1188649	38A-20	Flat Washer (7 req)	117	1580243	117-FTHII80LD2	Drive Plate
15	1229374	15-TRQ40	Dog Asm (2 req)	39	1580224	39-FTHII80LD2	Screw (2 req)	117A	1580244	117A-FTHII80LD2	Drag Washer (Assembly)
15A	1580194	15A-FTHIILD	Anti Rev Dog Retainer	39A	1580225	38-FTHII60NLD2	Screw (2 req)	117W	1580245	117W-FTHII80LD2	Drag Washer Metal
18	1265001	18-TRQ40NLD2	Spring Washer (2 req)	39B	1589724	39B-FTHII80LD2	Flat Washer (2 req)	134	1338160	134-FTH40NLD	Gear Stud
21	1580201	21-FTHII60NLDHS	Drag Lever	41	1265056	41-TRQ40NLD2	Drag Disengaging Spring	134A	1265086	134A-30SLD2	Nut Gear Stud
23	1589722	23-FTHIILD	Handle Screw (Black)	46A	1488755	46A-FTHII30LW	Cover Plate Screw (2 req)	141	1580246	141-FTHIILD	Cam Follower
23A	1589723	23A-FTHIILD	Handle Lock Screw (Black)	50	1309889	50-FTH60LD2	Shield Guard	144	1580247	144-FTHIILD	Preset Knob Assembly
23B	1207784	23B-20	Handle Screw Washer	54	1580226	54-FTHII60NLD2	Harness Lug (2 req)	149	1184702	149-45	Rod Clamp Nut (2 req)
23L	1191283	23L-750	Screw	54A	1580227	54A-FTHII60NLD2	Harness Lug Plug (2 req)	149A	1184706	149-200	Hex Nut (2 req)
24	1580205	24-FTHIILD	Handle Assembly	54C	1580228	54C-FTHII60NLD2	Harness Lug Screw (4 req)	161A	1265098	161A-TRQ15LD2	Lever Click Pin
24C	1361267	24C-16VIS	Cap- Handle Knob	55A	1238912	55A-50SLD	Ball Bearing	161B	1265099	161B-TRQ40NLD2	Strike Button
24S	1580207	24S-FTHII80LD2	Screw (2 req)	55L	1286985	55L-20	Ball Bearing (2 req)	183	1580263	183-FTHII60NLDHS	Frame Assembly
25	1580208	25-FTHII80LD2	Handle Knob	55T	1238913	55T-30SLD	Thrust Bearing	195	1184955	195-40	Retaining Ring
26	1265023	26-TRQ40NLD2	Bearing	62	1188664	62-20	Click Spring				
26N	1182145	26N-25	Bearing	62A	1236596	62-TRQ40	Spring Click Locator				
				62C	1188654	62C-20	Screw (7 req)				



Thank you for your recent PENN gear purchase. No matter where you fish or what you fish for, you can depend PENN to perform in any battle day in and day out. Now it's time to get your product registered and get out on the water.

<https://register.pennfishing.com>