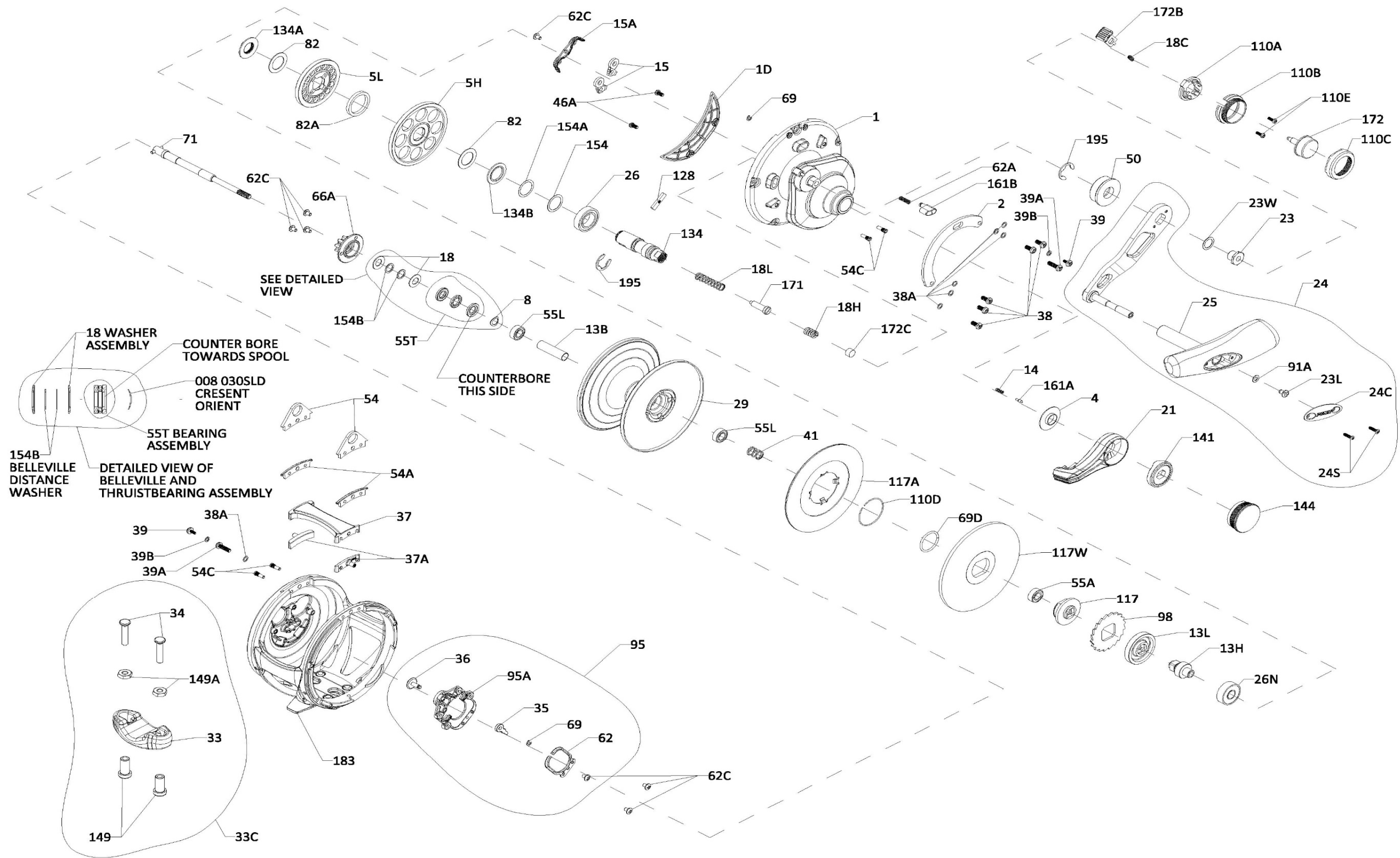




PARTS LIST FOR MODEL
FATHOM II 60NLD2, 80LD2
REEL PART NO. 1563184, 1563185





PARTS LIST FOR MODEL
 FATHOM II 60NLD2, 80LD2
 REEL PART NO. 1563184, 1563185

Key No.	Part No.	Penn Style No.	Description Parts List	Key No.	Part No.	Penn Style No.	Description Parts List	Key No.	Part No.	Penn Style No.	Description Parts List
1	1580166	1-FTHII60NLD2	Right Side Plate (60N)	29	1580215	29-FTHII60NLD2	Spool (60N)	82	1265070	82-TRQ40NLD2	Washer Teflon (2 req)
1	1580168	1-FTHII80LD2	Right Side Plate (80)	29	1580216	29-FTHII80LD2	Spool (80)	82A	1265071	82A-30SLD2	Washer Gear Separating
1D	1580172	1D-FTHII80LD2	Gearbox Cover	33	1290729	33-TRQ	Rod Clamp	91A	1277514	91A-TRQ40NLD2	Handle Knob Washer
2	1580176	2-FTHII80LD2	Quadrant	33C	1580218	33C-FTHIILD2	Rod Clamp Kit	95	1580237	95-FTHIILD2	Click Module Assembly
4	1264978	4-TRQ15LD2	Lever Washer	34	1580220	34-FTHIILD2	Screw, Rod Clamp (2 req)	95A	1580238	95A-FTHIILD2	Click Module Housing
5H	1264983	5-FTH40NLD2HS	Main Gear High Speed (60N)	35	1188656	35-20	Click Tongue	98	1265073	98-FTH40NLD2	Ratchet
5H	1580180	5-FTHII80LD2HS	Main Gear High Speed (80)	36	1516151	36-FTHII15SD	Click Button	110A	1580239	110A-FTHIILD2	Shift Button Base
5L	1580183	5-FTHII80LD2LS	Main Gear Low Speed	37	1580221	37-FTHII60NLD2	Top Crossbar (60N)	110B	1580240	110B-FTHIILD2	Shift Button Body
8	1257843	8-30SLD	Spring Washer	37	1580222	37-FTHII80LD2	Top Crossbar (80)	110C	1580241	110C-FTHIILD2	Shift Button Retain Ring
13B	1264997	13B-TRQ15LD2	Spacer Tube (60N)	37A	1580223	37A-FTHII60NLD2	Harness Lug Nut (2 req)	110D	1309895	110D-FTH15LD2	Retaining Ring
13B	1580187	13B-FTHII80LD2	Spacer Tube (80)	38	1309885	38-FTH15LD	Screw (5 req)	110E	1580242	110E-FTHIILD2	Screw (2 req)
13H	1264995	13-FTH40NLD2HS	Pinion High Speed (60N)	38A	1188649	38A-20	Flat Washer (7 req)	117	1580243	117-FTHII80LD2	Drive Plate
13H	1580190	13-FTHII80LD2HS	Pinion High Speed (80)	39	1580224	39-FTHII80LD2	Screw (2 req)	117A	1580244	117A-FTHII80LD2	Drag Washer (Assembly)
13L	1580193	13-FTHII80LD2LS	Pinion Low Speed	39A	1580225	38-FTHII60NLD2	Screw (2 req)	117W	1580245	117W-FTHII80LD2	Drag Washer Metal
14	1181406	14-535	Spring	39B	1589724	39B-FTHII80LD2	Flat Washer (2 req)	128	1265084	128-30SLD2	Shift Key
15	1229374	15-TRQ40	Dog Asm (2 req)	41	1265056	41-TRQ40NLD2	Drag Disengaging Spring	134	1265085	134-30SLD2	Gear Stud
15A	1580194	15A-FTHIILD	Anti Rev Dog Retainer	46A	1488755	46A-FTHII30LW	Cover Plate Screw (2 req)	134A	1265086	134A-30SLD2	Nut Gear Stud
18	1265001	18-TRQ40NLD2	Spring Washer (2 req)	50	1309889	50-FTH60LD2	Shield Guard	134B	1265087	134B-30SLD2	Washer Support Gear Stud
18C	1181632	18C-15KG	Spring Shift Button	54	1580226	54-FTHII60NLD2	Harness Lug (2 req)	141	1580246	141-FTHIILD	Cam Follower
18H	1265002	18H-30SLD2	Spring	54A	1580227	54A-FTHII60NLD2	Harness Lug Plug (2 req)	144	1580247	144-FTHIILD	Preset Knob Assembly
18L	1265003	18L-30SLD2	Spring	54C	1580228	54C-FTHII60NLD2	Harness Lug Screw (4 req)	149	1184702	149-45	Rod Clamp Nut (2 req)
21	1580202	21-FTHII80LD2	Drag Lever	55A	1238912	55A-50SLD	Ball Bearing	149A	1184706	149-200	Hex Nut (2 req)
23	1580203	23-FTHIILD2	Screw Handle Nut	55L	1286985	55L-20	Ball Bearing (2 req)	154	1265092	154-TRQ40NLD2	Gear Stud Shim (As Required)
23L	1191283	23L-750	Screw	55T	1238913	55T-30SLD	Thrust Bearing	154A	1306668	154A-TRQ40NLD2	Gear Stud Shim (As Required)
23W	1286986	23W-TRQ40NLD2	Handle Nut Washer	62	1188664	62-20	Click Spring	154B	1309903	154B-FTH25NLD2	Belleville Distance Washer (2 req)
24	1580206	24-FTHII80LD2	Handle Assembly	62A	1236596	62-TRQ40	Spring Click Locator	161A	1265098	161A-TRQ15LD2	Lever Click Pin
24C	1361267	24C-16VIS	Cap- Handle Knob	62C	1188654	62C-20	Screw (7 req)	161B	1265099	161B-TRQ40NLD2	Strike Button
24S	1580207	24S-FTHII80LD2	Screw (2 req)	66A	1265059	66A-FTHLD	Click Gear	171	1265101	171-30SLD2	Plunger Gear Shift
25	1580208	25-FTHII80LD2	Handle Knob	69	1188657	69-20	Retainer (2 req)	172	1580248	172-FTHIILD2	Shift Button Assembly
26	1265023	26-TRQ40NLD2	Bearing	69D	1265060	69D-FTH15LD	Retaining Ring	172B	1580249	172B-FTHIILD2	Shift Latch
26N	1182145	26N-25	Bearing	71	1580235	71-FTHII60NLD2	Spindle (60N)	172C	1184831	172B-30VS	Spacer
				71	1580236	71-FTHII80LD2	Spindle (80)	183	1580262	183-FTHII60NLD2	Frame Assembly (60N)
								183	1580264	183-FTHII80LD2	Frame Assembly (80)
								195	1184955	195-40	Retaining Ring (2 req)



Thank you for your recent PENN gear purchase. No matter where you fish or what you fish for, you can depend PENN to perform in any battle day in and day out. Now it's time to get your product registered and get out on the water.

<https://register.pennfishing.com>