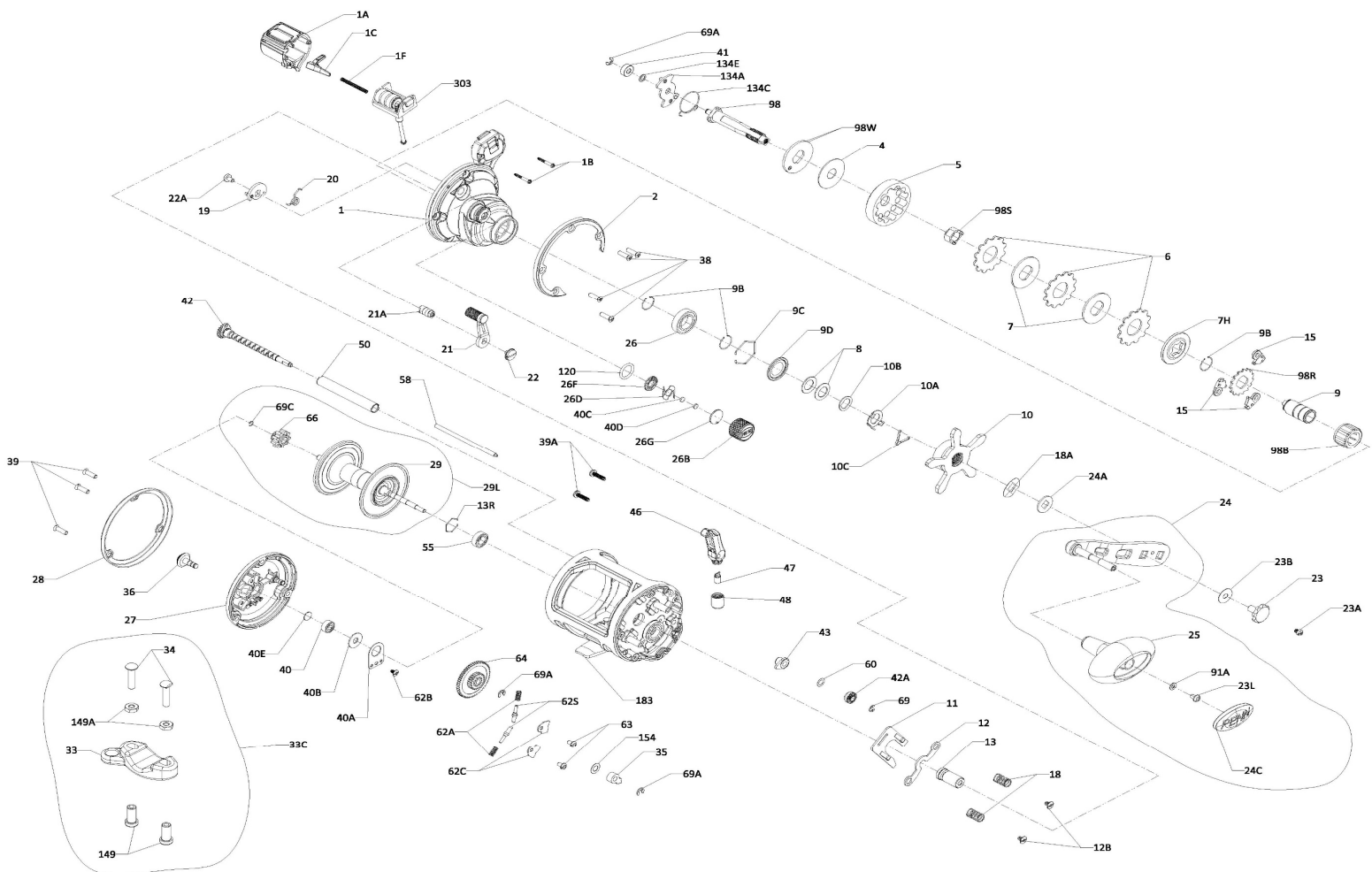




PARTS LIST FOR MODEL
SQUALL II 20LWLC
REEL PART NO. 1545927

Key No.	Part No.	Penn Style No.	Description Parts List	Key No.	Part No.	Penn Style No.	Description Parts List	Key No.	Part No.	Penn Style No.	Description Parts List
1	1552953	1-SQLII20LWLC	Right Side Plate	10	1488735	10-FTHII30LW	Star Assembly	22	1526450	22-SQLIISD	Eccentric Screw (Smoke)
1A	1553049	1A-SQLII20LWLC	Line Counter Cover	10A	1188711	10A-20	Star Click Retainer	22A	1188690	22-20	Eccentric Screw
1B	1488818	1B-FTHII30LWLC	Screw L. C. Cover (2 req)	10B	1188710	10B-20	Star Click Washer	23	1208117	23-20	Handle Screw
1C	1488819	1C-FTHII30LWLC	L. C Wiper	10C	1188712	10C-525MAG2	Star Click Spring	23A	1188717	23A-20	Handle Lock Screw
1F	1488820	1F-FTHII30LWLC	LC Lens Wiper Spring	11	1553062	11-SQLII20LWLC	Eccentric Jack	23B	1207784	23B-20	Handle Screw Washer
2	1553051	2-SQLII20LWLC	Side Plate Ring (Smoke)	12	1308746	12-SQL15LW	Yoke	23L	1191283	23L-750	Screw
4	1488726	4-FTHII30LW	Drag Washer	12B	1526440	12B-SQLIISD	Pinion Yoke Screw (2 req)	24	1526451	24-SQLII40SD	Handle Assembly
5	1553057	5-SQLII20LW	Main Gear	13	1553064	13-SQLII15LW	Pinion	24A	1188715	24A-20	Handle Thrust Washer
6	1237037	6-TRQ40	Washer, Tab Drag (3 req)	13R	1308748	13R-SQL15LW	Retainer Ring	24C	1191335	24C-66	Cap- Handle Knob
7	1516068	7-FTHII12SD	Keyed Metal Drag Washer (2 req)	15	1188675	15-20	Anti Reverse Dog (3 req)	25	1240293	25-TRQ40	Handle Knob
7H	1516139	7H-FTHII12SD	Heavy Metal Drag Washer	18	1188688	18-FTHLW20	Pinion Yoke Spring (2 req)	26	1265023	26-TRQ40NLD2	Ball Bearing
8	1188709	8-20	Spring Washer (2 req)	18A	1188714	18A-20	Keyed Spring Washer	26B	1488746	26B-FTHII30LW	Spool Tension Knob
9	1516200	9-FTHII40SD	Spacer Sleeve	19	1308750	19-SQL15LW	Eccentric	26D	1125769	26D-525MAG2	Click Spring
9B	1488732	9B-FTHII30LW	Retainer Ring (3 req)	20	1188689	20-20	Eccentric Spring	26F	1125768	26F-525MAG2	Click Plate A
9C	1488733	9C-FTHII30LW	Retainer Ring	21	1526448	21-SQLII15SD	Eccentric Lever (Smoke)	26G	1125772	26G-525MAG2	Click Plate B
9D	1488734	9D-FTHII30LW	Bearing Cover	21A	1553067	21A-SQLII20LW	Eccentric Pin	27	1553071	27-SQLII20LWLC	L. Side Plate Assembly



27	1553071	27-SQLII20LWLC	L. Side Plate Assembly	33	1229936	33-113	Rod Clamp	33C	1229936	33C-TRQ40	Rod Clamp Kit
28	1553077	28-SQLII20LW	Side Plate Ring (Smoke)	34	1182788	34-45	Screw, Rod Clamp (2 req)	34	1182788	34-45	Screw, Rod Clamp (2 req)
29	1553082	29-SQLII20LWLC	Spool (Smoke/Gold)	35	1308758	35-SQLLW	Click Tongue	35	1308758	35-SQLLW	Click Tongue
29L	1553090	29L-SQLII20LWLC	Spool Assembly	36	1308759	36-SQLLW	Click Button	36	1308759	36-SQLLW	Click Button
33	1229936	33-113	Rod Clamp	39	1553143	39-SQLIILW	Screw (7 req)	39	1553143	39-SQLIILW	Screw (7 req)
33C	1229936	33C-TRQ40	Rod Clamp Kit	39A	1553097	39A-SQLIILW	Screw, Thread Cutting (2 req)	39A	1553097	39A-SQLIILW	Screw, Thread Cutting (2 req)
34	1182788	34-45	Screw, Rod Clamp (2 req)	40	1188661	40-20	Bearing	40	1188661	40-20	Bearing
34	1182788	34-45	Screw, Rod Clamp (2 req)	40A	1188663	40A-20	Ball Bearing Retainer	40A	1188663	40A-20	Ball Bearing Retainer
35	1308758	35-SQLLW	Click Tongue	40B	1188662	40B-20	Felt Washer	40B	1188662	40B-20	Felt Washer
36	1308759	36-SQLLW	Click Button	40C	1208115	40C-525MAG2	Washer, Metal Thrust	40C	1208115	40C-525MAG2	Washer, Metal Thrust
39	1553143	39-SQLIILW	Screw (7 req)	40D	1125771	40D-525MAG2	Washer, Rubber Thrust	40D	1125771	40D-525MAG2	Washer, Rubber Thrust
39A	1553097	39A-SQLIILW	Screw, Thread Cutting (2 req)	40E	1308762	40E-SQLLW	Bronze Washer	40E	1308762	40E-SQLLW	Bronze Washer
40	1188661	40-20	Bearing	41	1308763	41-SQL15LW	Bushing	41	1308763	41-SQL15LW	Bushing
40A	1188663	40A-20	Ball Bearing Retainer	42	1308795	42-SQL20LWLC	Worm Shaft Assembly	42	1308795	42-SQL20LWLC	Worm Shaft Assembly
40B	1188662	40B-20	Felt Washer	43	1188669	43-20	Line Guide Assembly	43	1188669	43-20	Line Guide Assembly
40C	1208115	40C-525MAG2	Washer, Metal Thrust	46	1208119	46-20	Line Guide Pawl	46	1208119	46-20	Line Guide Pawl
40D	1125771	40D-525MAG2	Washer, Rubber Thrust	47	1188672	47-20	Line Guide Nut (Gold)	47	1188672	47-20	Line Guide Nut (Gold)
40E	1308762	40E-SQLLW	Bronze Washer	48	1208120	48-20	Worm Shield (20)	48	1208120	48-20	Worm Shield (20)
41	1308763	41-SQL15LW	Bushing	50	1308773	50-SQL20LW	Ball Bearing	50	1308773	50-SQL20LW	Ball Bearing
42	1308795	42-SQL20LWLC	Worm Shaft Assembly	55	1308764	55-SQL15LW	Line Guide Post (20)	55	1308764	55-SQL15LW	Line Guide Post (20)
43	1188669	43-20	Line Guide Assembly	58	1188730	58-25	Spring Click (2 req)	58	1188730	58-25	Spring Click (2 req)
46	1208119	46-20	Line Guide Pawl	62A	1184033	62A-310	Screw	62A	1184033	62A-310	Screw
47	1188672	47-20	Line Guide Nut (Gold)	62B	1188722	62B-SQLIILW	Click Spring Cover (2 req)	62B	1188722	62B-SQLIILW	Click Spring Cover (2 req)
48	1208120	48-20	Worm Shield (20)	62C	1184041	62C-321LH	Click Pin (2 req)	62C	1184041	62C-321LH	Click Pin (2 req)
50	1308773	50-SQL20LW	Ball Bearing	62S	1308765	62S-SQLLW	Click Spring Screw (2 req)	62S	1308765	62S-SQLLW	Click Spring Screw (2 req)
55	1308764	55-SQL15LW	Line Guide Post (20)	63	1184052	63-500S	Idler Gear	63	1184052	63-500S	Idler Gear
58	1188730	58-25	Spring Click (2 req)	64	1188658	64-20	O-Ring	64	1188658	64-20	O-Ring
62A	1184033	62A-310	Screw	66	1188678	66-20	Spool Gear, Click Ratchet	66	1188678	66-20	Spool Gear, Click Ratchet
62B	1188722	62B-SQLIILW	Click Spring Cover (2 req)	69	1308797	69-SQL20LC	Retainer 2.5x6	69	1308797	69-SQL20LC	Retainer 2.5x6
62C	1184041	62C-321LH	Click Pin (2 req)	69A	1188659	69A-20	Retainer (3 req)	69A	1188659	69A-20	Retainer (3 req)
62S	1308765	62S-SQLLW	Click Spring Screw (2 req)	69C	1188677	69C-20	Retainer "C" Ring	69C	1188677	69C-20	Retainer "C" Ring
63	1184052	63-500S	Idler Gear	91A	1277514	91A-TRQ40NLD2	Handle Knob Washer	91A	1277514	91A-TRQ40NLD2	Handle Knob Washer
64	1188658	64-20	O-Ring	98	1553099	98-SQLII30LWLC	Main Gear Shaft	98	1553099	98-SQLII30LWLC	Main Gear Shaft
66	1188678	66-20	Spool Gear, Click Ratchet	98B	1488764	98B-FTHII30LW	IAR Bearing	98B	1488764	98B-FTHII30LW	IAR Bearing
69	1308797	69-SQL20LC	Retainer 2.5x6	98S	1488766	98S-FTHII30LW	Gear Stud Bushing	98S	1488766	98S-FTHII30LW	Gear Stud Bushing
69A	1188659	69A-20	Retainer (3 req)	98R	1488765	98R-FTHII30LW	Ratchet	98R	1488765	98R-FTHII30LW	Ratchet
69C	1188677	69C-20	Retainer "C" Ring	98W	1553102	98W-SQLII20LWLC	Thrust Washer	98W	1553102	98W-SQLII20LWLC	Thrust Washer
91A	1277514	91A-TRQ40NLD2	Handle Knob Washer	120	1184522	120-113H	O-Ring	120	1184522	120-113H	O-Ring
98	1553099	98-SQLII30LWLC	Main Gear Shaft	134A	1553103	134A-SQLII20LWLC	Clutch Recover Plate	134A	1553103	134A-SQLII20LWLC	Clutch Recover Plate
98B	1488764	98B-FTHII30LW	IAR Bearing	134C	1553104	134C-SQLII20LWLC	Clutch Recover Spring	134C	1553104	134C-SQLII20LWLC	Clutch Recover Spring
98S	1488766	98S-FTHII30LW	Gear Stud Bushing	134E	1553105	134E-SQLII20LWLC	Spacer Washer	134E	1553105	134E-SQLII20LWLC	Spacer Washer
98R	1488765	98R-FTHII30LW	Ratchet	149	1184702	149-45	Rod Clamp Nut (2 req)	149	1184702	149-45	Rod Clamp Nut (2 req)
98W	1553102	98W-SQLII20LWLC	Thrust Washer	149A	1184706	149-200	Hex Nut (2 req)	149A	1184706	149-200	Hex Nut (2 req)
120	1184522	120-113H	O-Ring	154	1184721	154-117	Click Button Washer	154	1184721	154-117	Click Button Washer
134A	1553103	134A-SQLII20LWLC	Clutch Recover Plate	183	1553108	183-SQLII20LWLC	Frame Assembly	183	1553108	183-SQLII20LWLC	Frame Assembly
134C	1553104	134C-SQLII20LWLC	Clutch Recover Spring	303	1553114	303-SQLII20LWLC	Counter Wheel Assembly	303	1553114	303-SQLII20LWLC	Counter Wheel Assembly
134E	1553105	134E-SQLII20LWLC	Spacer Washer								
149	1184702	149-45	Rod Clamp Nut (2 req)								
149A	1184706	149-200	Hex Nut (2 req)								
154	1184721	154-117	Click Button Washer								
183	1553108	183-SQLII20LWLC	Frame Assembly								
303	1553114	303-SQLII20LWLC	Counter Wheel Assembly								