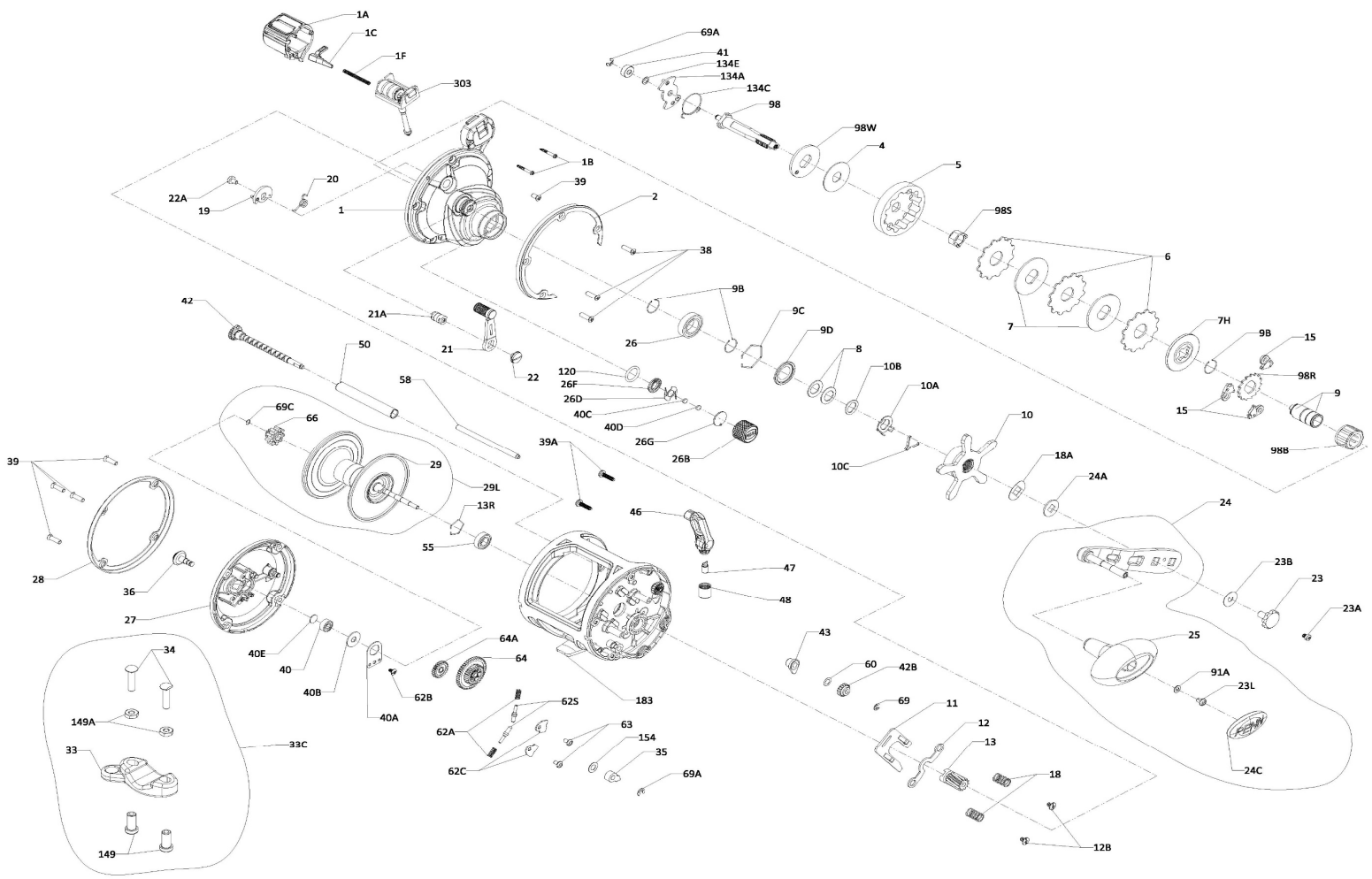




PARTS LIST FOR MODEL
SQUALL II 30LWLC
REEL PART NO. 1545930

Key No.	Part No.	Penn Style No.	Description Parts List	Key No.	Part No.	Penn Style No.	Description Parts List	Key No.	Part No.	Penn Style No.	Description Parts List
1	1552956	1-SQLI30LWLC	Right Side Plate	10	1488735	10-FTHI30LW	Star Assembly	22	1526450	22-SQLI5D	Eccentric Screw (Smoke)
1A	1553049	1A-SQLI20LWLC	Line Counter Cover	10A	1188711	10A-20	Star Click Retainer	22A	1188690	22-20	Eccentric Screw
1B	1488818	1B-FTHI30LWLC	Screw L. C. Cover (2 req)	10B	1188710	10B-20	Star Click Washer	23	1208117	23-20	Handle Screw
1C	1488819	1C-FTHI30LWLC	L. C Wiper	10C	1188712	10C-525MAG2	Star Click Spring	23A	1188717	23A-20	Handle Lock Screw
1F	1488820	1F-FTHI30LWLC	LC Lens Wiper Spring	11	1553063	11-SQLI30LWLC	Eccentric Jack	23B	1207784	23B-20	Handle Screw Washer
2	1553054	2-SQLI30LWLC	Side Plate Ring (Smoke)	12	1308778	12-SQL30LW	Yoke	23L	1191283	23L-750	Screw
4	1488726	4-FTHI30LW	Drag Washer	12B	1526440	12B-SQLI5D	Pinion Yoke Screw (2 req)	24	1526451	24-SQLI405D	Handle Assembly
5	1553059	5-SQLI30LW	Main Gear	13	1308779	13-SQL30LW	Pinion	24A	1188715	24A-20	Handle Thrust Washer
6	1188705	6-20	Washer, Tab Drag (3 req)	13R	1308780	13R-SQL30LW	Retainer Ring	24C	1191335	24C-66	Cap- Handle Knob
7	1488788	7-FTHI20LW	Keyed Metal Drag Washer (2 req)	15	1188675	15-20	Anti Reverse Dog (3 req)	25	1240293	25-TRQ40	Handle Knob
7H	1488789	7H-FTHI20LW	Heavy Metal Drag Washer	18	1188688	18-FTHLW20	Pinion Yoke Spring (2 req)	26	1265023	26-TRQ40NLD2	Ball Bearing
8	1188709	8-20	Spring Washer (2 req)	18A	1188714	18A-20	Keyed Spring Washer	26B	1488746	26B-FTHI30LW	Spool Tension Knob
9	1516200	9-FTHI405D	Spacer Sleeve	19	1308750	19-SQL15LW	Eccentric	26D	1125769	26D-525MAG2	Click Spring
9B	1488732	9B-FTHI30LW	Retainer Ring (3 req)	20	1188689	20-20	Eccentric Spring	26F	1125768	26F-525MAG2	Click Plate A
9C	1488733	9C-FTHI30LW	Retainer Ring	21	1526449	21-SQLI405D	Eccentric Lever (Smoke)	26G	1125772	26G-525MAG2	Click Plate B
9D	1488734	9D-FTHI30LW	Bearing Cover	21A	1553068	21A-SQLI30LW	Eccentric Pin	27	1553074	27-SQLI30LWLC	L. Side Plate Assembly



27	1553074	27-SQLI30LWLC	L. Side Plate Assembly	33	1229936	33-113	Rod Clamp	33C	1229936	33C-TRQ40	Rod Clamp Kit
28	1553078	28-SQLI30LW	Side Plate Ring (Smoke)	34	1182788	34-45	Screw, Rod Clamp (2 req)	34	1182788	34-45	Screw, Rod Clamp (2 req)
29	1553085	29-SQLI30LWLC	Spool (Smoke/Gold)	35	1308758	35-SQLLW	Click Tongue	35	1308758	35-SQLLW	Click Tongue
29L	1553093	29L-SQLI30LWLC	Spool Assembly	36	1308759	36-SQLLW	Click Button	36	1308759	36-SQLLW	Click Button
33	1229936	33-113	Rod Clamp	38	1553096	38-SQLI30LWLC	Screw	38	1553096	38-SQLI30LWLC	Screw
33C	1229936	33C-TRQ40	Rod Clamp Kit	39	1553143	39-SQLI1LW	Screw (7 req)	39	1553143	39-SQLI1LW	Screw (7 req)
34	1182788	34-45	Screw, Rod Clamp (2 req)	39A	1553097	39A-SQLI1LW	Screw, Thread Cutting (2 req)	39A	1553097	39A-SQLI1LW	Screw, Thread Cutting (2 req)
35	1308758	35-SQLLW	Click Tongue	40	1188661	40-20	Bearing	40	1188661	40-20	Bearing
36	1308759	36-SQLLW	Click Button	40A	1188663	40A-20	Ball Bearing Retainer	40A	1188663	40A-20	Ball Bearing Retainer
38	1553096	38-SQLI30LWLC	Screw	40B	1188662	40B-20	Felt Washer	40B	1188662	40B-20	Felt Washer
39	1553143	39-SQLI1LW	Screw (7 req)	40C	1208115	40C-525MAG2	Washer, Metal Thrust	40C	1208115	40C-525MAG2	Washer, Metal Thrust
39A	1553097	39A-SQLI1LW	Screw, Thread Cutting (2 req)	40D	1125771	40D-525MAG2	Washer, Rubber Thrust	40D	1125771	40D-525MAG2	Washer, Rubber Thrust
40	1188661	40-20	Bearing	40E	1308762	40E-SQLLW	Bronze Washer	40E	1308762	40E-SQLLW	Bronze Washer
40A	1188663	40A-20	Ball Bearing Retainer	41	1308763	41-SQL15LW	Bushing	41	1308763	41-SQL15LW	Bushing
40B	1188662	40B-20	Felt Washer	42	1308795	42-SQL20LWLC	Worm Shaft Assembly	42	1308795	42-SQL20LWLC	Worm Shaft Assembly
40C	1208115	40C-525MAG2	Washer, Metal Thrust	43	1188669	43-20	Worm Shaft Bushing	43	1188669	43-20	Worm Shaft Bushing
40D	1125771	40D-525MAG2	Washer, Rubber Thrust	46	1208129	46-40	Line Guide Assembly	46	1208129	46-40	Line Guide Assembly
40E	1308762	40E-SQLLW	Bronze Washer	47	1188672	47-20	Line Guide Pawl	47	1188672	47-20	Line Guide Pawl
41	1308763	41-SQL15LW	Bushing	48	1208120	48-20	Line Guide Nut (Gold)	48	1208120	48-20	Line Guide Nut (Gold)
42	1308795	42-SQL20LWLC	Worm Shaft Assembly	50	1188728	50-25	Worm Shield	50	1188728	50-25	Worm Shield
43	1188669	43-20	Worm Shaft Bushing	55	1308787	55-SQL30LW	Ball Bearing	55	1308787	55-SQL30LW	Ball Bearing
46	1208129	46-40	Line Guide Assembly	58	1308788	58-SQL30LW	Line Guide Post	58	1308788	58-SQL30LW	Line Guide Post
47	1188672	47-20	Line Guide Pawl	62A	1184033	62A-310	Spring Click (2 req)	62A	1184033	62A-310	Spring Click (2 req)
48	1208120	48-20	Line Guide Nut (Gold)	62B	1188722	62B-SQLLW	Screw	62B	1188722	62B-SQLLW	Screw
50	1188728	50-25	Worm Shield	62C	1184041	62C-321LH	Click Spring Cover (2 req)	62C	1184041	62C-321LH	Click Spring Cover (2 req)
55	1308787	55-SQL30LW	Ball Bearing	62S	1308765	62S-SQLLW	Click Pin (2 req)	62S	1308765	62S-SQLLW	Click Pin (2 req)
58	1308788	58-SQL30LW	Line Guide Post	63	1184052	63-500S	Click Spring Screw (2 req)	63	1184052	63-500S	Click Spring Screw (2 req)
62A	1184033	62A-310	Spring Click (2 req)	64	1488762	64-FTHI30LW	Idler Gear	64	1488762	64-FTHI30LW	Idler Gear
62B	1188722	62B-SQLLW	Screw	64A	1208073	64A-40	Idler Gear	64A	1208073	64A-40	Idler Gear
62C	1184041	62C-321LH	Click Spring Cover (2 req)	66	1188678	66-20	Spool Gear, Click Ratchet	66	1188678	66-20	Spool Gear, Click Ratchet
62S	1308765	62S-SQLLW	Click Pin (2 req)	69	1308797	69-SQL20LC	Retainer 2.5x6	69	1308797	69-SQL20LC	Retainer 2.5x6
63	1184052	63-500S	Click Spring Screw (2 req)	69A	1188659	69A-20	Retainer (2 req)	69A	1188659	69A-20	Retainer (2 req)
64	1488762	64-FTHI30LW	Idler Gear	69C	1188677	69C-20	Retainer "C" Ring	69C	1188677	69C-20	Retainer "C" Ring
64A	1208073	64A-40	Idler Gear	91A	1277514	91A-TRQ40NLD2	Handle Knob Washer	91A	1277514	91A-TRQ40NLD2	Handle Knob Washer
66	1188678	66-20	Spool Gear, Click Ratchet	98	1553099	98-SQLI30LWLC	Main Gear Shaft	98	1553099	98-SQLI30LWLC	Main Gear Shaft
69	1308797	69-SQL20LC	Retainer 2.5x6	98B	1488764	98B-FTHI30LW	IAR Bearing	98B	1488764	98B-FTHI30LW	IAR Bearing
69A	1188659	69A-20	Retainer (2 req)	98S	1488766	98S-FTHI30LW	Gear Stud Bushing	98S	1488766	98S-FTHI30LW	Gear Stud Bushing
69C	1188677	69C-20	Retainer "C" Ring	98R	1488765	98R-FTHI30LW	Ratchet	98R	1488765	98R-FTHI30LW	Ratchet
91A	1277514	91A-TRQ40NLD2	Handle Knob Washer	98W	1553102	98W-SQLI20LWLC	Thrust Washer	98W	1553102	98W-SQLI20LWLC	Thrust Washer
98	1553099	98-SQLI30LWLC	Main Gear Shaft	120	1184522	120-113H	O-Ring	120	1184522	120-113H	O-Ring
98B	1488764	98B-FTHI30LW	IAR Bearing	134A	1553103	134A-SQLI20LWLC	Clutch Recover Plate	134A	1553103	134A-SQLI20LWLC	Clutch Recover Plate
98S	1488766	98S-FTHI30LW	Gear Stud Bushing	134C	1553104	134C-SQLI20LWLC	Clutch Recover Spring	134C	1553104	134C-SQLI20LWLC	Clutch Recover Spring
98R	1488765	98R-FTHI30LW	Ratchet	134E	1553105	134E-SQLI20LWLC	Spacer Washer	134E	1553105	134E-SQLI20LWLC	Spacer Washer
98W	1553102	98W-SQLI20LWLC	Thrust Washer	149	1184702	149-45	Rod Clamp Nut (2 req)	149	1184702	149-45	Rod Clamp Nut (2 req)
120	1184522	120-113H	O-Ring	149A	1184706	149-200	Hex Nut (2 req)	149A	1184706	149-200	Hex Nut (2 req)
134A	1553103	134A-SQLI20LWLC	Clutch Recover Plate	154	1184721	154-117	Click Button Washer	154	1184721	154-117	Click Button Washer
134C	1553104	134C-SQLI20LWLC	Clutch Recover Spring	183	1553111	183-SQLI30LWLC	Frame Assembly	183	1553111	183-SQLI30LWLC	Frame Assembly
134E	1553105	134E-SQLI20LWLC	Spacer Washer	303	1553115	303-SQLI30LWLC	Counter Wheel Assembly	303	1553115	303-SQLI30LWLC	Counter Wheel Assembly