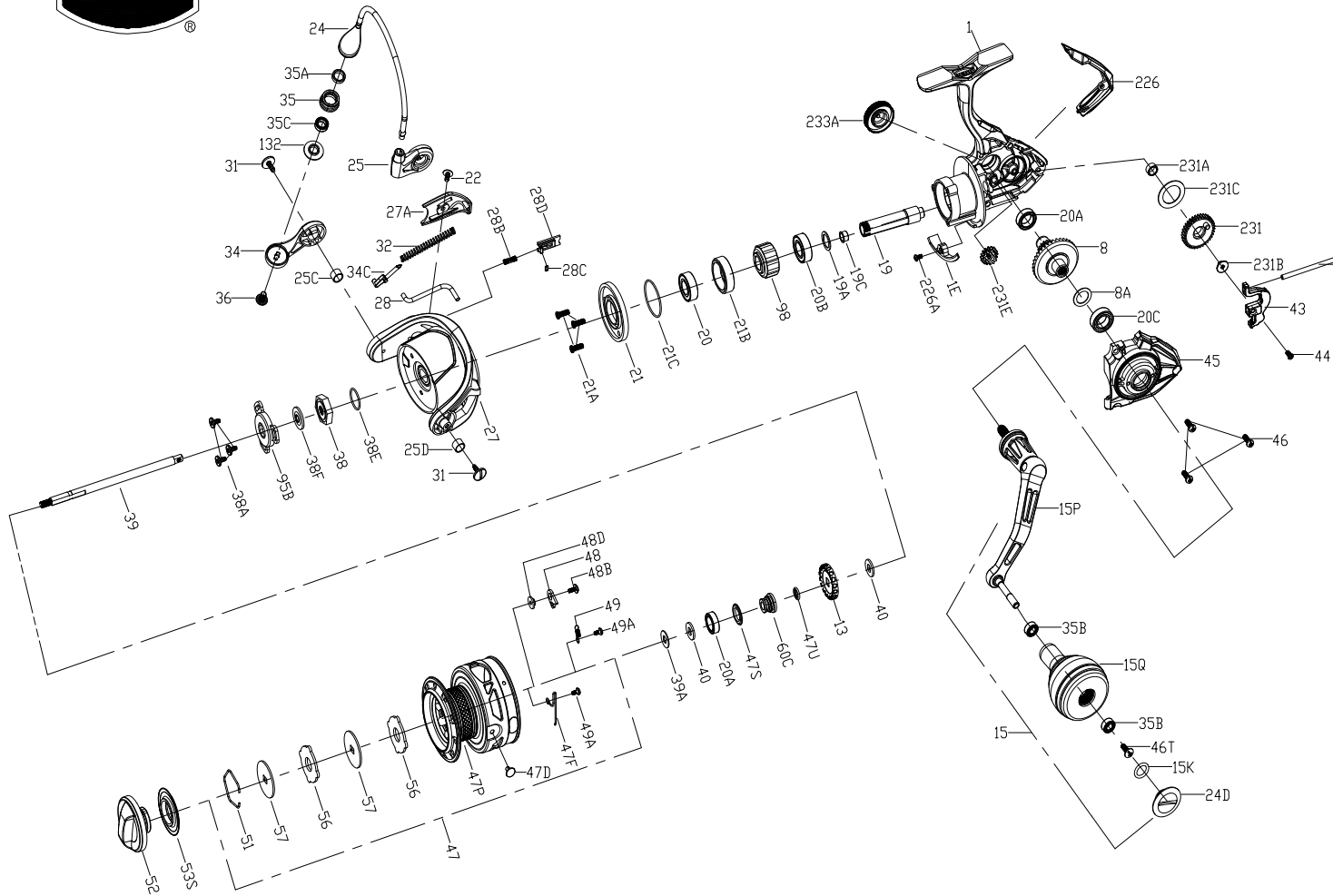




PARTS LIST FOR MODEL CLAI13000HS



KEY NO.	PART NO.	PENN STYLE NO.	DESCRIPTION
28	1525196	28-CLAI13000	Rotor Trip Lever
28B	1385546	28B-CLA3000	Rotor Brake Spring
28C	1385547	28C-CLA3000	Rotor Brake Seal
28D	1385545	28D-CLA3000	Rotor Brake
31	1385548	31-CLA3000	Bail Arm Screw(2 req)
32	1385549	32-CLA3000	Bail Spring
34	1385550	34-CLA3000	Bail Arm
34C	1385551	34C-CLA3000	Pivot Arm
35	1525198	35-CLAI13000	Line Roller
35A	1474155	35A-SLAI13500	Line Roller Bushing
35B	1418393	35B-CLA3000	Ball Bearing(2 req)
35C	1525199	35C-CLAI13000	Bearing
36	1277061	36-SSV5500	Line Roller Screw
38	1418993	38-SLA3500	Rotor Nut
38A	1385554	38A-CLA2000	Screw(3 req)
38E	1418958	38E-SLA3500	Pinion Gear Seal
38F	1418959	38F-SLA3500	Rotor-Main Shaft Seal
39	1525200	39-CLAI13000	Main Shaft
39A	1494694	39A-SSV12500LL	Washer
40	1422917	40-SLA3500	Washer(2 req)
43	1525202	43-CLAI13000	Oscillation Slider
43F	1525203	43F-CLAI13000	Guide Shaft
44	1525911	44-CLAI13000	Screw
45	1525223	45-CLAI13000HS	Body Cover Assembly
46	1385567	46-CLA3000	Body Cover Screw(3 req)
46T	1341500	3-SSV7500LC	Screw
47	1525225	47-CLAI13000HS	Spool Assembly
47D	1276953	47D-SSV3500	Line Clip
47F	1385572	47F-CLA3000	Line Clip Retainer
47P	1525227	47P-CLAI13000HS	Spool
47S	1494699	47S-SSV12500LL	Seal
47U	1494700	47U-SSV12500LL	Seal
48	1525912	48-CLAI13000	Spool Clicker Plate
48B	1385581	48B-CLA3000	Spool Clicker Spring Screw
48D	1385579	48D-CLA3000	Spool Clicker Spacer Ring
49	1385580	49-CLA3000	Spool Clicker Spring
49A	1341547	49A-SSV7500LC	Spool Clicker Spring Screw(2 req)
51	1277085	51-SSV5500	Drag Washer Retainer
52	1525211	52-CLAI13000	Drag Knob Assembly
53S	1447888	53S-CFTI13000	Drag Knob Seal
56	1385584	56-CLA3000	Drag Friction Washer(2 req)
57	1525213	57-CLAI13000	Washer(2 req)
60C	1525214	60C-CLAI13000	Spool Support Sleeve
95B	1419009	95B-SLA3500	Rotor Nut Locking Plate
98	1525913	98-CLAI13000	Clutch/Sleeve Assembly
132	1527945	132-CLAI14000	Line Roller Collar
226	1525215	226-CLAI13000	Rear Cover
226A	1525914	226A-CLAI13000	Screw
231	1385592	231-CLA3000	Oscillation Gear
231A	1385595	231A-CLA2000	Oscillation Gear Bushing
231B	1307857	231B-SSV3500	Oscillation Gear Screw
231C	1525915	231C-CLAI13000	Oscillation Gear Washer
231E	1385597	231E-CLA4000	Slow Oscillation Gear
233A	1525216	233A-CLAI13000	Handle Cap Assembly

KEY NO.	PART NO.	PENN STYLE NO.	DESCRIPTION
1	1525217	1-CLAI13000HS	Body Assembly
1E	1525183	1E-CLAI13000	Body Slope
8	1525219	8-CLAI13000HS	Drive Gear
8A	1276920	8A-SSV3500	Drive Gear Shim Washer
13	1418974	13-SLA3500	Click Gear
15	1525220	15-CLAI13000HS	Handle Assembly
15K	1447871	15L-CFTI13000	Handle Knob Seal
15P	1525221	15P-CLAI13000HS	Sub-Handle Assembly
15Q	1525254	15Q-CLAI13000	Handle Knob Assembly
19	1525222	19-CLAI13000HS	Pinion Gear
19A	1277424	19A-SSV3500	Pinion Gear Washer
19C	1418978	19C-SLA3500	Pinion Gear Bushing
20	1525189	20E-CLA3000	Bearing
20A	1385530	20A-CLA3000	Sealed Ball Bearing(2 req)

KEY NO.	PART NO.	PENN STYLE NO.	DESCRIPTION
20B	1385531	20B-CLA3000	Sealed Ball Bearing
20C	1385532	20C-CLA3000	Sealed Ball Bearing
21	1525190	21-CLAI13000	Ball Bearing Retainer
21A	1418980	21A-SLA3500	Retainer Screw(3 req)
21B	1385535	21B-CLA3000	Pinion Ball Bearing Collar
21C	1418981	21C-SLA3500	Body Head Seal
22	1122148	22-CLA3000	Rotor Cover Screw
24	1474153	24-SLAI13500	One Piece Bail
24D	1417808	24C-CLA5000	Handle Knob Cap
25	1525191	25-CLAI14000	Bail Holder
25C	1385540	25C-CLA3000	Bail Holder Bushing
25D	1527946	25D-CLAI14000	Bushing
27	1525192	27-CLAI13000	Rotor
27A	1525194	27A-CLAI13000	Rotor Cover