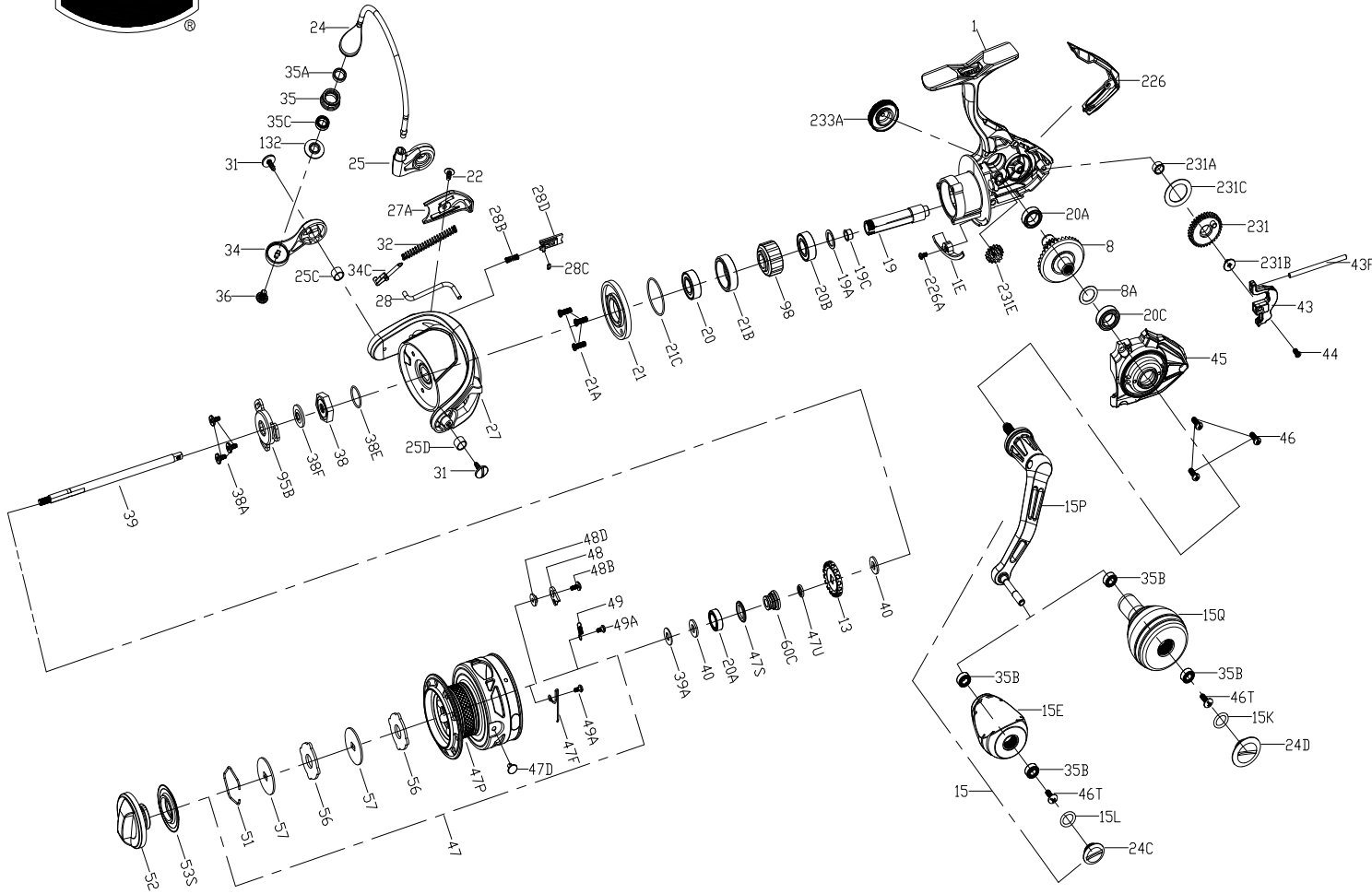




# PARTS LIST FOR MODEL CLAI4000



| KEY NO. | PART NO. | PENN STYLE NO. | DESCRIPTION                       |
|---------|----------|----------------|-----------------------------------|
| 27A     | 1525195  | 27A-CLAI4000   | Rotor Cover                       |
| 28      | 1525197  | 28-CLAI4000    | Rotor Trip Lever                  |
| 28B     | 1385546  | 28B-CLA3000    | Rotor Brake Spring                |
| 28C     | 1385547  | 28C-CLA3000    | Rotor Brake Seal                  |
| 28D     | 1385545  | 28D-CLA3000    | Rotor Brake                       |
| 31      | 1385548  | 31-CLA3000     | Bail Arm Screw(2 req)             |
| 32      | 1385549  | 32-CLA3000     | Bail Spring                       |
| 34      | 1385550  | 34-CLA3000     | Bail Arm                          |
| 34C     | 1385551  | 34C-CLA3000    | Pivot Arm                         |
| 35      | 1525198  | 35-CLAI3000    | Line Roller                       |
| 35A     | 1474155  | 35A-SLAI13500  | Line Roller Bushing               |
| 35B     | 1418393  | 35B-CLA3000    | Ball Bearing(2 req)               |
| 35C     | 1525199  | 35C-CLAI3000   | Bearing                           |
| 36      | 1277061  | 36-SSV5500     | Line Roller Screw                 |
| 38      | 1418993  | 38-SLA3500     | Rotor Nut                         |
| 38A     | 1385554  | 38A-CLA2000    | Screw(3 req)                      |
| 38E     | 1418958  | 38E-SLA3500    | Pinion Gear Seal                  |
| 38F     | 1418959  | 38F-SLA3500    | Rotor-Main Shaft Seal             |
| 39      | 1525201  | 39-CLAI4000    | Main Shaft                        |
| 39A     | 1494694  | 39A-SSVI2500LL | Washer                            |
| 40      | 1422917  | 40-SLA3500     | Washer(2 req)                     |
| 43      | 1525202  | 43-CLAI3000    | Oscillation Slider                |
| 43F     | 1525203  | 43F-CLAI3000   | Guide Shaft                       |
| 44      | 1525911  | 44-CLAI3000    | Screw                             |
| 45      | 1525205  | 45-CLAI4000    | Body Cover Assembly               |
| 46      | 1385567  | 46-CLA3000     | Body Cover Screw(3 req)           |
| 46T     | 1341500  | 3-SSV7500LC    | Screw                             |
| 47      | 1525207  | 47-CLAI4000    | Spool Assembly                    |
| 47D     | 1276953  | 47D-SSV3500    | Line Clip                         |
| 47F     | 1525208  | 47F-CLAI4000   | Line Clip Retainer                |
| 47P     | 1525210  | 47P-CLAI4000   | Spool                             |
| 47S     | 1494699  | 47S-SSVI2500LL | Seal                              |
| 47U     | 1494700  | 47U-SSVI2500LL | Seal                              |
| 48      | 1385578  | 48-CLA3000     | Spool Clicker Plate               |
| 48B     | 1385581  | 48B-CLA3000    | Spool Clicker Spring Screw        |
| 48D     | 1385579  | 48D-CLA3000    | Spool Clicker Spacer Ring         |
| 49      | 1385580  | 49-CLA3000     | Spool Clicker Spring              |
| 49A     | 1341547  | 49A-SSV7500LC  | Spool Clicker Spring Screw(2 req) |
| 51      | 1277085  | 51-SSV5500     | Drag Washer Retainer              |
| 52      | 1525212  | 52-CLAI4000    | Drag Knob Assembly                |
| 53S     | 1447888  | 53S-CFTII3000  | Drag Knob Seal                    |
| 56      | 1385584  | 56-CLA3000     | Drag Friction Washer(2 req)       |
| 57      | 1525213  | 57-CLAI3000    | Washer(2 req)                     |
| 60C     | 1525214  | 60C-CLAI3000   | Spool Support Sleeve              |
| 95B     | 1419009  | 95B-SLA3500    | Rotor Nut Locking Plate           |
| 98      | 1525913  | 98-CLAI3000    | Clutch/Sleeve Assembly            |
| 132     | 1527945  | 132-CLAI4000   | Line Roller Collar                |
| 226     | 1525215  | 226-CLAI3000   | Rear Cover                        |
| 226A    | 1525914  | 226A-CLAI3000  | Screw                             |
| 231     | 1385593  | 231-CLA4000    | Oscillation Gear                  |
| 231A    | 1385595  | 231A-CLA2000   | Oscillation Gear Bushing          |
| 231B    | 1307857  | 231B-SSV3500   | Oscillation Gear Screw            |
| 231C    | 1525915  | 231C-CLAI3000  | Oscillation Gear Washer           |
| 231E    | 1385597  | 231E-CLA4000   | Slow Oscillation Gear             |
| 233A    | 1525216  | 233A-CLAI3000  | Handle Cap Assembly               |

| KEY NO. | PART NO. | PENN STYLE NO. | DESCRIPTION            |
|---------|----------|----------------|------------------------|
| 1       | 1525182  | 1-CLAI4000     | Body Assembly          |
| 1E      | 1525183  | 1E-CLAI3000    | Body Slope             |
| 8       | 1385502  | 8-CLA3000      | Drive Gear             |
| 8A      | 1276920  | 8A-SSV3500     | Drive Gear Shim Washer |
| 13      | 1418974  | 13-SLA3500     | Click Gear             |
| 15      | 1525185  | 15-CLAI3000    | Handle Assembly        |
| 15E     | 1552553  | 15E-CLAI3000   | Handle Knob Assembly   |
| 15K     | 1447871  | 15L-CFTII3000  | Handle Knob Seal       |
| 15L     | 1417804  | 15L-CLA2000    | Handle Knob Seal       |
| 15P     | 1525187  | 15P-CLAI3000   | Sub-Handle Assembly    |
| 15Q     | 1552554  | 15Q-CLAI3000   | Handle Knob Assembly   |
| 19      | 1525188  | 19-CLAI3000    | Pinion Gear            |
| 19A     | 1277424  | 19A-SSV3500    | Pinion Gear Washer     |
| 19C     | 1418978  | 19C-SLA3500    | Pinion Gear Bushing    |
| 20      | 1525189  | 20E-CLA3000    | Bearing                |

| KEY NO. | PART NO. | PENN STYLE NO. | DESCRIPTION                |
|---------|----------|----------------|----------------------------|
| 20A     | 1385530  | 20A-CLA3000    | Sealed Ball Bearing(2 req) |
| 20B     | 1385531  | 20B-CLA3000    | Sealed Ball Bearing        |
| 20C     | 1385532  | 20C-CLA3000    | Sealed Ball Bearing        |
| 21      | 1525190  | 21-CLAI3000    | Ball Bearing Retainer      |
| 21A     | 1418980  | 21A-SLA3500    | Retainer Screw(3 req)      |
| 21B     | 1385535  | 21B-CLA3000    | Pinion Ball Bearing Collar |
| 21C     | 1418981  | 21C-SLA3500    | Body Head Seal             |
| 22      | 1122148  | 22-CLA3000     | Rotor Cover Screw          |
| 24      | 1527947  | 24-CLAI4000    | One Piece Bail             |
| 24C     | 1417806  | 24C-CLA3000    | Handle Knob Cap            |
| 24D     | 1417808  | 24C-CLA5000    | Handle Knob Cap            |
| 25      | 1525191  | 25-CLAI4000    | Bail Holder                |
| 25C     | 1385540  | 25C-CLA3000    | Bail Holder Bushing        |
| 25D     | 1527946  | 25D-CLAI4000   | Bushing                    |
| 27      | 1525193  | 27-CLAI4000    | Rotor                      |