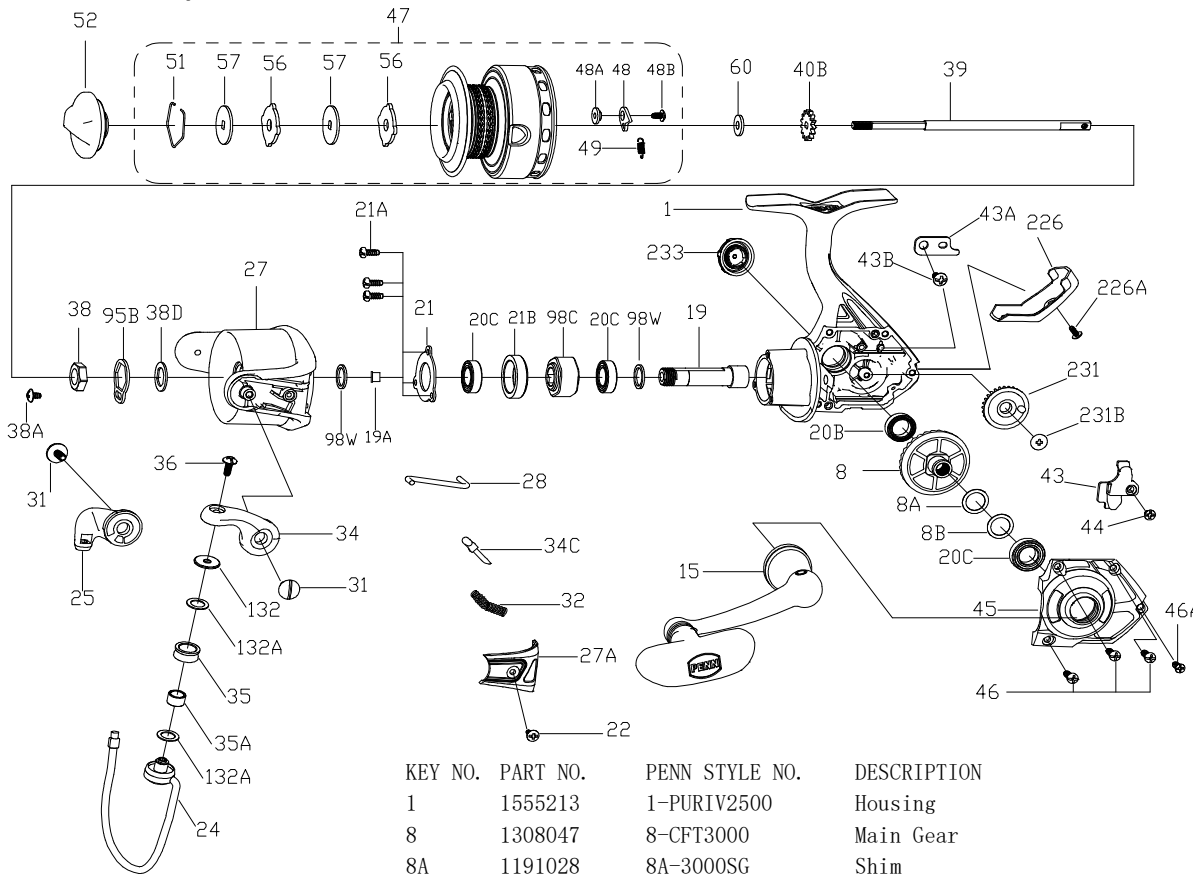




PARTS LIST FOR MODEL AS PURIV2500



| KEY NO. | PART NO. | PENN STYLE NO. | DESCRIPTION |
|---------|----------|-----------------|-----------------------------|
| 27 | 1485196 | 27-PURIII2500 | Rotor |
| 27A | 1313812 | 27A-CFT2500 | Bail Pivot Cover |
| 28 | 1313813 | 28-CFT2500 | Trip Lever |
| 31 | 1313814 | 31-CFT2500 | Bail Arm Screw (2 req) |
| 32 | 1191583 | 32-2000SG | Bail Spring |
| 34 | 1313815 | 34-CFT2500 | Bail Arm |
| 34C | 1313816 | 34C-CFT2500 | Pivot Arm |
| 35 | 1313817 | 35-CFT2500 | Line Roller |
| 35A | 1313818 | 35A-CFT2500 | Line Roller Bushing |
| 36 | 1251748 | 36-1000FRC | Bail Stud Screw |
| 38 | 1191727 | 38-2000SG | Rotor Nut |
| 38A | 1203995 | 38A-3000PUR | Rotor Locking Plate Screw |
| 38D | 1308070 | 38D-CFT3000 | Rotor Nut Washer |
| 39 | 1313819 | 39-CFT2500 | Main Shaft |
| 40B | 1191778 | 40B-2000SG | Click Ratchet |
| 43 | 1485208 | 43-PURIII2500 | Crosswind Block |
| 43A | 1191818 | 43A-3000SG | Crosswind Block Plate |
| 43B | 1203997 | 43B-3000PUR | Screw |
| 44 | 1191843 | 44-3000SG | Crosswind Block Screw |
| 45 | 1485200 | 45-PURIII2500 | Housing Cover |
| 46 | 1485201 | 46-PURIII3000 | Housing Cover Screw (3 req) |
| 46A | 1485202 | 46A-PURIII3000 | Housing Cover Screw |
| 47 | 1555216 | 47-PURIV2500 | Spool Assembly |
| 48 | 1211604 | 48-3000SG | Click Tongue |
| 48A | 1214226 | 48A-3000SG | Click Tongue Washer |
| 48B | 1214189 | 48B-3000SG | Spool Click Screw |
| 49 | 1211605 | 49-3000SG | Click Tongue Spring |
| 51 | 1313823 | 51-CFT2500 | Drag Retaining Ring |
| 52 | 1555217 | 52-PURIV2500 | Drag Knob Assembly |
| 56 | 1485194 | 56-PURIII2500 | Drag Washer (2 req) |
| 57 | 1192041 | 57-2000SG | Keyed Washer (2 req) |
| 60 | 1192059 | 60-2000SG | Thrust Washer |
| 95B | 1308081 | 95B-CFT3000 | Rotor Locking Plate |
| 98C | 1192212 | 98C-3000SG | Clutch/Sleeve Assembly |
| 98W | 1204004 | 98W-3000PUR | Clutch Washer (2 req) |
| 132 | 1313826 | 132-CFT2500 | Roller Washer |
| 132A | 1192301 | 132A-2000SG | Line Roller Washer (2 req) |
| 226 | 1485204 | 226-PURIII2500 | Rear Cover |
| 226A | 1485205 | 226A-PURIII2500 | Rear Cover Screw |
| 231 | 1485206 | 231-PURIII2500 | Crosswind Gear |
| 231B | 1485207 | 231B-PURIII2500 | Screw Crosswind Gear |
| 233 | 1529387 | 233-BTLIII3000 | Bearing Cover Assembly |

| KEY NO. | PART NO. | PENN STYLE NO. | DESCRIPTION |
|---------|----------|----------------|--------------------------------|
| 1 | 1555213 | 1-PURIV2500 | Housing |
| 8 | 1308047 | 8-CFT3000 | Main Gear |
| 8A | 1191028 | 8A-3000SG | Shim |
| 8B | 1485199 | 8B-PURIII3000 | Shim B |
| 15 | 1555214 | 15-PURIV2500 | Handle Assembly |
| 19 | 1495904 | 19-PURIII2500 | Pinion Gear |
| 19A | 1364314 | 19A-BTLII2500 | Pinion Bushing |
| 20B | 1211610 | 20D-5000BTL | Housing Ball Bearing |
| 20C | 1308050 | 20-CFT3000 | Ball Bearing (3 req) |
| 21 | 1485197 | 21-PURIII2500 | Bearing Retainer |
| 21A | 1204016 | 21A-5000PUR | Bearing Retainer Screw (3 req) |
| 21B | 1192646 | 21B-2000SG | Collar |
| 22 | 1203978 | 22-3000PUR | Bail Pivot Cover Screw |
| 24 | 1555215 | 24-PURIV2500 | Bail Wire |
| 25 | 1313810 | 25-CFT2500 | Bail Holder |

407-PURIV2500 Rev. 0 2-1-2021

1545779