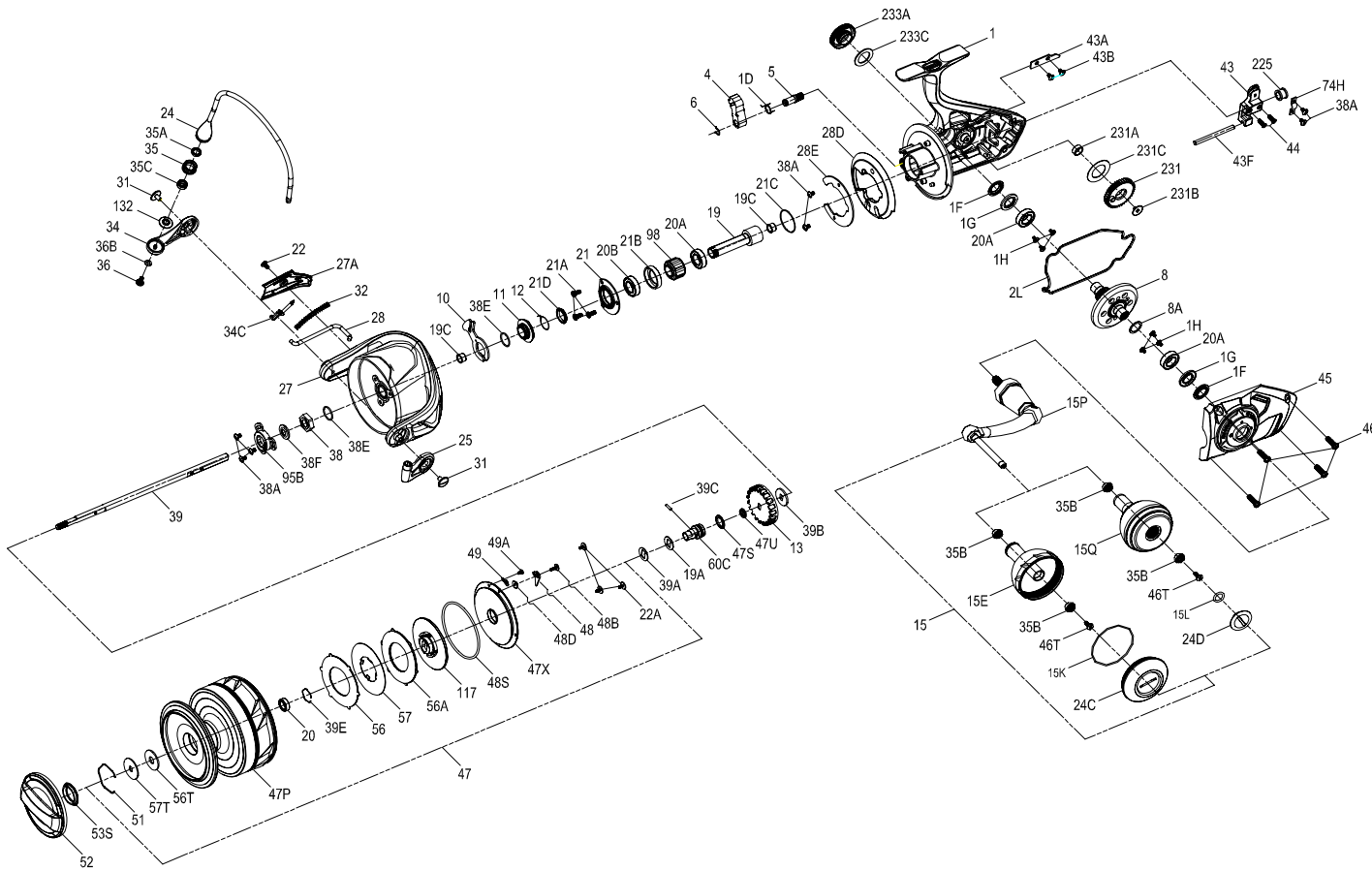




PARTS LIST FOR MODEL SLAMMERIV 10500



| KEY NO. | PART NO. | STYLE NO. | DESCRIPTION |
|---------|----------|---------------|-----------------------------------|
| 1 | 1559397 | 1-SLAIV10500 | Body Assembly |
| 1D | 1277252 | 1D-SSV9500 | A/R Pawl Post |
| 1F | 1419083 | 1F-SLA7500 | Body Side Seal (2req.) |
| 1G | 1419082 | 1G-SLA7500 | Body Side Seal Lock Plate (2req.) |
| 1H | 1418967 | 1H-SLA3500 | Body Side Screw (6req.) |
| 2L | 1419124 | 2L-SLA9500 | Body Seal |
| 4 | 1277294 | 4-SSV10500 | A/R Pawl |
| 5 | 1277255 | 5-SSV9500 | A/R Pawl Spring |
| 6 | 1277256 | 6-SSV9500 | Retainer Clip |
| 8 | 1419125 | 8-SLA9500 | Driver Gear |
| 8A | 1277146 | 8A-SSV7500 | Driver Gear Shim Washer |
| 10 | 1419126 | 10-SLA9500 | A/R Pawl Holder |
| 11 | 1559343 | 11-SLAIV7500 | A/R Bushing |
| 12 | 1309001 | 12-SSV9500 | A/R Bushing Spring |
| 13 | 1419127 | 13-SLA9500 | Spool Click Gear |
| 15 | 1559398 | 15-SLAIV10500 | Handle Assembly |
| 15E | 1559264 | 15E-SLAIV5500 | Handle Knob |

| KEY NO. | PART NO. | STYLE NO. | DESCRIPTION |
|---------|----------|----------------|-------------------------------|
| 15K | 1419073 | 15K-SLA5500 | Handle Knob Cap Seal |
| 15L | 1417804 | 15L-CLA2000 | Handle Knob Cap Seal |
| 15P | 1422397 | 15P-SLA9500 | Sub-Handle Assembly |
| 15Q | 1418244 | 15E-CLA6000 | Handle Knob |
| 19 | 1419129 | 19-SLA9500 | Pinion Gear |
| 19A | 1559399 | 19A-SLAIV10500 | Washer |
| 19C | 1419130 | 19C-SLA9500 | Pinion Gear Bushing (2req.) |
| 20 | 1385530 | 20A-CLA3000 | Sealed Ball Bearing |
| 20A | 1277152 | 20A-SSV7500 | Ball Bearing (3req.) |
| 20B | 1422398 | 20B-SLA9500 | Sealed Ball Bearing |
| 21 | 1559400 | 21-SLAIV10500 | Ball Bearing Retainer |
| 21A | 1277154 | 21A-SSV7500 | Pinion Retainer Screw (3req.) |
| 21B | 1419132 | 21B-SLA9500 | Pinion Ball Bearing Collar |
| 21C | 1385684 | 21C-CLA8000 | O Ring |
| 21D | 1559346 | 21D-SLAIV7500 | Body Head Seal |
| 22 | 1277046 | 22-SSV5500 | Rotor Cover Screw |
| 22A | 1418982 | 22A-SLA3500 | Drag Cover Screw (3req.) |

| KEY NO. | PART NO. | STYLE NO. | DESCRIPTION |
|---------|----------|-----------------|------------------------------------|
| 24 | 1559401 | 24-SLAIV10500 | One Piece Bail |
| 24C | 1559269 | 24C-SLAIV5500 | Handle Knob Cap |
| 24D | 1417808 | 24C-CLA5000 | Handle Knob Cap |
| 25 | 1385663 | 25-CLA8000 | Bail Holder |
| 27 | 1559402 | 27-SLAIV10500 | Rotor |
| 27A | 1559403 | 27A-SLAIV10500 | Rotor Cover |
| 28 | 1559404 | 28-SLAIV10500 | Bail Trip Lever |
| 28D | 1419140 | 28D-SLA9500 | Rotor Brake |
| 28E | 1294662 | 28E-SSV10500 | Rotor Brake Cover |
| 31 | 1277055 | 31-SSV5500 | Bail Arm Screw (2req.) |
| 32 | 1419141 | 32-SLA9500 | Bail Spring |
| 34 | 1385667 | 34-CLA8000 | Bail Arm |
| 34C | 1277164 | 34C-SSV7500 | Pivot Arm |
| 35 | 1277165 | 35-SSV7500 | Line Roller |
| 35A | 1419050 | 35A-SLA5500 | Line Roller Bushing |
| 35B | 1277060 | 35A-SSV5500 | Line Roller Ball Bearing (4req.) |
| 35C | 1559273 | 35C-SLAIV5500 | Ball Bearing |
| 36 | 1422399 | 36-SLA9500 | Line Roller Screw |
| 36B | 1417809 | 36B-CLA6000 | Bail Arm Screw Washer |
| 38 | 1419103 | 38-SLA7500 | Rotor Nut |
| 38A | 1277063 | 38A-SSV5500 | Rotor Nut Lock Plate Screw (7req.) |
| 38E | 1418968 | 38E-SLA3500 | Pinion Gear Seal (2req.) |
| 38F | 1419143 | 38F-SLA9500 | Main Shaft Seal |
| 39 | 1559405 | 39-SLAIV10500 | Main Shaft |
| 39A | 1559406 | 39A-SLAIV10500 | Spool Adjust Washer |
| 39B | 1422994 | 39B-SLA9500 | Main Shaft Washer |
| 39C | 1559407 | 39C-SLAIV10500 | Main Shaft Dowel |
| 39E | 1559277 | 39E-SLAIV5500 | Lock Spring |
| 43 | 1419145 | 43-SLA9500 | Oscillation Slider |
| 43A | 1277273 | 43A-SSV9500 | Oscillation Slider Guide |
| 43B | 1277063 | 38A-SSV5500 | Rotor Nut Lock Plate Screw (2req.) |
| 43F | 1419146 | 43F-SLA9500 | Guide Shaft |
| 44 | 1277174 | 44-SSV7500 | Main Shaft Screw (2req.) |
| 45 | 1559408 | 45-SLAIV10500 | Body Cover Assembly |
| 46 | 1277275 | 46-SSV9500 | Body Cover Screw (4req.) |
| 46T | 1341500 | 3-SSV7500LC | A/R Screw (2req.) |
| 47 | 1559409 | 47-SLAIV10500 | Spool Assembly |
| 47P | 1559410 | 47P-SLAIV10500 | Spool |
| 47S | 1559411 | 47S-SLAIV10500 | Seal |
| 47U | 1559412 | 47U-SLAIV10500 | Seal |
| 47X | 1559413 | 47X-SLAIV10500 | Drag Cover |
| 48 | 1419155 | 48-SLA9500 | Spool Clicker |
| 48B | 1419156 | 48B-SLA9500 | Spool Clicker Spring Screw |
| 48D | 1422400 | 48D-SLA9500 | Spool Clicker Spacer Ring |
| 48S | 1559414 | 48S-SLAIV10500 | Seal |
| 49 | 1419157 | 49-SLA9500 | Spool Click Spring |
| 49A | 1419158 | 49A-SLA9500 | Spool Click Spring Screw |
| 51 | 1277085 | 51-SSV5500 | Drag Washer Retainer |
| 52 | 1559415 | 52-SLAIV10500 | Drag Knob Assembly |
| 53S | 1293252 | 53S-SSV5500 | Drag Knob Seal |
| 56 | 1415388 | 6-T2S7-1 | Drag Friction Washer |
| 56A | 1415389 | 6-T2S7-2 | Drag Friction Washer |
| 56T | 1277089 | 56T-SSV5500 | Drag Friction Washer |
| 57 | 1559416 | 57-SLAIV10500 | Keyed Drag Washer |
| 57T | 1419068 | 57T-SLA5500 | Keyed Drag Washer |
| 60C | 1559417 | 60C-SLAIV10500 | Spool Support Sleeve |
| 74H | 1422401 | 74H-SLA9500 | Rear Bushing Plate |
| 95B | 1419114 | 95B-SLA7500 | Rotor Nut Locking Plate |
| 98 | 1277190 | 98-SSV7500 | Clutch/Sleeve Assembly |
| 117 | 1559418 | 117-SLAIV10500 | Drag Drive Plate |
| 132 | 1419163 | 132-SLA9500 | Line Roller Collar |
| 225 | 1419164 | 225-SLA9500 | Rear Bushing |
| 231 | 1419166 | 231-SLA9500 | Oscillation Gear |
| 231A | 1419167 | 231A-SLA9500 | Oscillation Gear Bushing |
| 231B | 1419168 | 231B-SLA9500 | Oscillation Gear Screw |
| 231C | 1422489 | 231C-SLA9500 | O/S Gear Washer |
| 233A | 1559419 | 233A-SLAIV10500 | Handle Cap |
| 233C | 1419170 | 233C-SLA9500 | Handle Cap Washer |