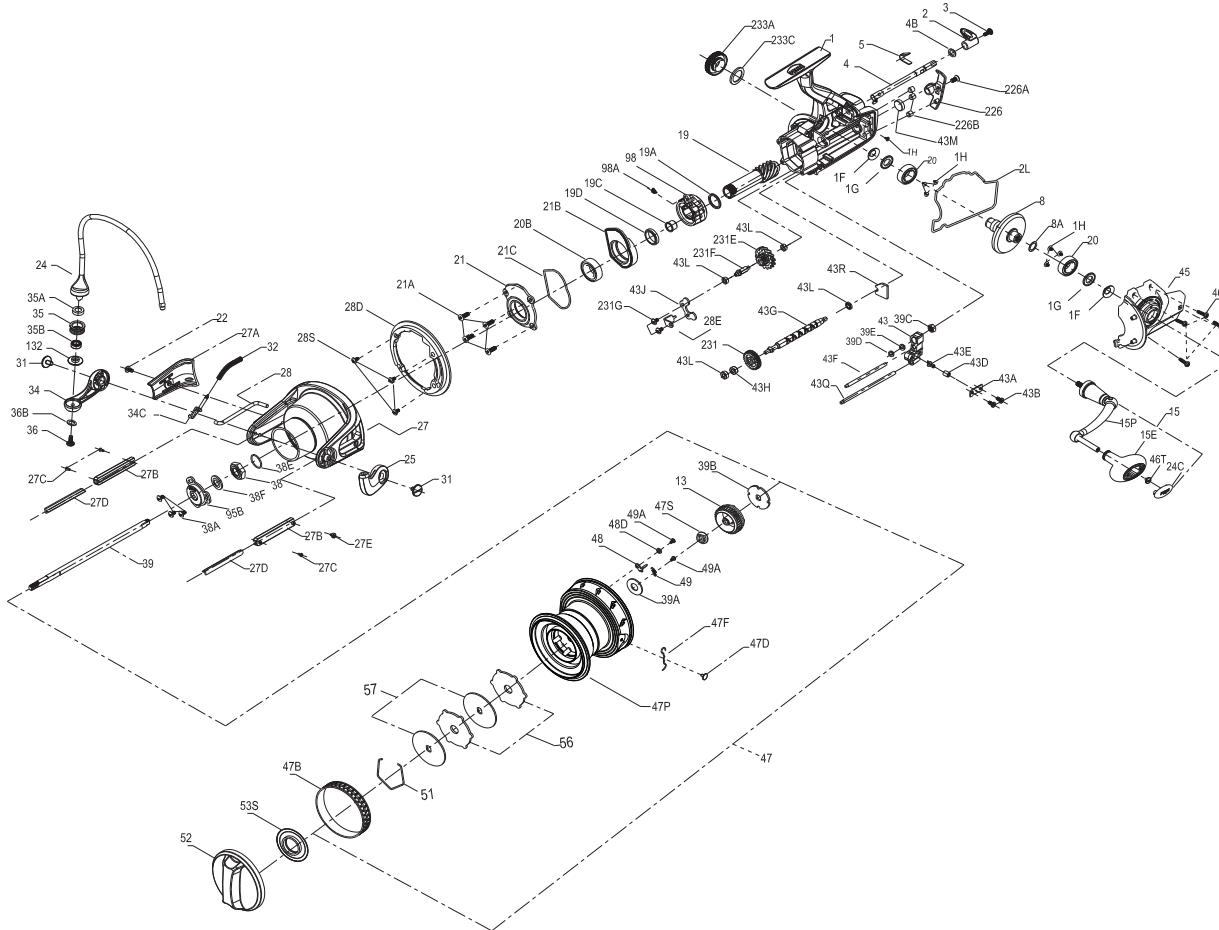




PARTS LIST FOR MODEL SSVII7500LC-US / SSVII7500LC-EU



KEY NO.	PART NO.	PENN STYLE NO.	DESCRIPTION
24C	1494753	24C-SSVI6500LL	Handle Knob Cap
25	1385663	25-CLA8000	Ball Holder
27	1494876	27-SSVI7500LC	Rotor
27A	1494877	27A-SSVI7500LC	Rotor Cover
27B	1494878	27B-SSVI7500LC	Line Guard Holder
27C	1341516	27C-SSVI7500LC	Screw
27D	1494879	27D-SSVI7500LC	Line Guard
27E	1381396	27E-SSVI7500LC	Screw
28	1494880	28-SSVI7500LC	Rotor Trip Lever
28D	1494881	28D-SSVI7500LC	Rotor Brake
28E	1341520	28E-SSVI7500LC	Brake Retainer Plate
28S	1277054	28S-SSVI7500LC	Screw
31	1277055	31-SSV5500	Screw
32	1494882	32-SSVI7500LC	Bail Spring
34	1385667	34-CLA8000	Bail Arm
34C	1277164	34C-SSV7500	Pivot Arm
35	1457403	35-SLA116500HS	Line Roller
35A	1457404	35A-SLA116500HS	Line Roller Bushing
35B	1377606	35B-BTL118000LC	Ball Bearing
36	1422399	36-SLA9500	Line Roller Screw
36B	1417809	36B-CLA6000	Bail Arm Screw Washer
38	1419103	38-SLA7500	Rotor Nut
38A	1277063	38A-SSV5500	Screw
38E	1302502	38E-SSV3500	Bearing Retainer O-Ring
38F	1419080	38F-SLA7500	Rotor-Main Shaft Seal
39	1494883	39-SSVI7500LC-US	Main Shaft
39	1494884	39-SSVI7500LC-EU	Main Shaft
39A	1341524	39A-SSV7500LC	Spool Adjust Washer
39B	1341525	39B-SSV7500LC	Main Shaft Washer
39C	1259637	39C-7000AF	Main Shaft Nut
39D	1483228	39D-CFT118000LC	Rubber Pad
39E	1483229	39E-CFT118000LC	Fixing Plate
43	1259636	43-AF8000LC	Worm O/S Slider
43A	1259635	43A-AF7000LC	Slider Retainer Plate
43B	1276992	14-SSV6500LL	Screw
43D	1122193	43D-7000AF	Guide Claw Bushing
43E	1122192	43E-7000AF	Guide Claw
43F	1259623	43F-AF8000LC	Right Guide Shaft
43G	1494885	43G-SSVI7500LC	Worm Shaft
43H	1377609	43H-BTL118000LC	Ball Bearing
43J	1259620	43J-7000AF	Top Retainer Plate
43L	1341533	43L-SSV7500LC	Bushing
43M	1341534	43M-SSV7500LC	Worm Shaft Seal
43Q	1259626	43Q-AF8000LC	Left Guide Shaft
43R	1259627	43R-AF8000LC	Rear Retainer Plate
45	1494886	45-SSVI7500LC	Body Cover Assembly
46	1381400	46-SSV7500LC	Screw
46T	1494762	46T-SSVI6500LL	Screw
47	1611033	47-SSVI7500LC	Spool Assembly
47B	1341538	47B-SSV7500LC	Spool Band
47D	1483213	47D-CFT118000LC	Line Clip
47E	1259575	47E-7000AF	Line Clip Spring
47F	1611034	47F-SSVI7500LC	Spool
47S	1484890	47S-SSVI7500LC	Seal
48	1259577	13-7000AF	Spool Click Plate
48D	1341546	48D-SSV7500LC	Spool Clicker Spacer Ring
49	1259579	49-7000AF	Spool Click Spring
49A	1341547	49A-SSV7500LC	Screw
51	1378418	51-BTL117000LC	Drag Washer Retainer
52	1494891	52-SSVI7500LC-US	Drag Knob Assembly
52	1494892	52-SSVI7500LC-EU	Drag Knob Assembly
53S	1483237	53S-CFT118000LC	Drag Knob Seal
56	1341550	56-SSV7500LC	Drag Friction Washer
57	1341551	57-SSV7500LC	Keyed Drag Washer
95B	1419114	95B-SLA7500	Rotor Nut Locking Plate
98	1259618	98-7000AF	One Way Clutch Bearing Assembly
98A	1361930	98A-SSV7500LC	Clutch Assembly Spring
132	1457405	132-SLA116500HS	Line Roller Collar
226	1494893	226-SSVI7500LC	Rotor Cover
226A	1341553	226A-SSVI7500LC	Screw
226B	1341554	226B-SSVI7500LC	Body Rear Seal
231	1259624	231-AF8000LC	O/S Gear
231E	1259622	231E-7000AF	Slow O/S Gear
231F	1259621	231F-7000AF	Slow O/S Gear Pin
231G	1277070	231G-SSV5500	Screw
233A	1419118	233A-SLA7500	Handle Cap Assembly
233C	1419076	233C-SLA5500	Handle Cap Seal
15	1494870	15-SSVI7500LC	Handle Assembly
15E	1494749	15E-SSVI6500LL	Handle Knob
19	1494871	19-SSVI7500LC	Pinion Gear
19A	1259612	19A-SSV7500LC	Washer
19C	1385663	19C-CLA8000	Pinion Gear Bushing
19D	1341509	19D-SSV7500LC	Bushing
20	1308090	20-CFT5000	Ball Bearing
20B	1344681	20B-SSV7500LC	Ball Bearing
21	1494872	21-SSVI7500LC	Ball Bearing Retainer
21A	1277044	21A-SSV5500	Screw
21B	1494873	21B-SSVI7500LC	Pinion Bearing Collar
21C	1494874	21C-SSVI7501LC	Pinion Bearing Collar Seal
22	1381395	22-SSV7500LC	Screw
24	1494875	24-SSVI7500LC	Bail Assembly

407-SSVI17500LC Rev. 00 10-05-2023

1594608-SSVI7500LC-US
1595352-SSVI7500LC-EU

KEY NO.	PART NO.	PENN STYLE NO.	DESCRIPTION	KEY NO.	PART NO.	PENN STYLE NO.	DESCRIPTION
1	1611031	1-SSVI7500LC-US	Body Assembly	15	1494870	15-SSVI7500LC	Handle Assembly
1	1611032	1-SSVI7500LC-EU	Body Assembly	15E	1494749	15E-SSVI6500LL	Handle Knob
1F	1419019	1F-SLA5500	Body Side Seal	19	1494871	19-SSVI7500LC	Pinion Gear
1G	1419020	1G-SLA5500	Lock Plate	19A	1259612	19A-SSV7500LC	Washer
1H	1418957	1H-SL3500	Screw	19C	1385663	19C-CLA8000	Pinion Gear Bushing
2	1341498	2-SSV7500LC	A/R Button	19D	1341509	19D-SSV7500LC	Bushing
2L	1494867	2L-SSVI7500LC	Body Seal	20	1308090	20-CFT5000	Ball Bearing
3	1341500	3-SSV7500LC	Screw	20B	1344681	20B-SSV7500LC	Ball Bearing
4	1494868	4-SSVI7500LC	A/R Lever	21	1494872	21-SSVI7500LC	Ball Bearing Retainer
4B	1361929	4A-SSV7500LC	A/R Lever Washer	21A	1277044	21A-SSV5500	Screw
5	1483180	5-CFT115000LC	A/R Spring	21B	1494873	21B-SSVI7500LC	Pinion Bearing Collar
8	1494869	8-SSVI7500LC	Drive Gear	21C	1494874	21C-SSVI7501LC	Pinion Bearing Collar Seal
8A	1277146	8A-SSV7500	Drive Gear Shim Washer	22	1381395	22-SSV7500LC	Screw
13	1347065	13-SSV7500LC	Click Gear	24	1494875	24-SSVI7500LC	Bail Assembly