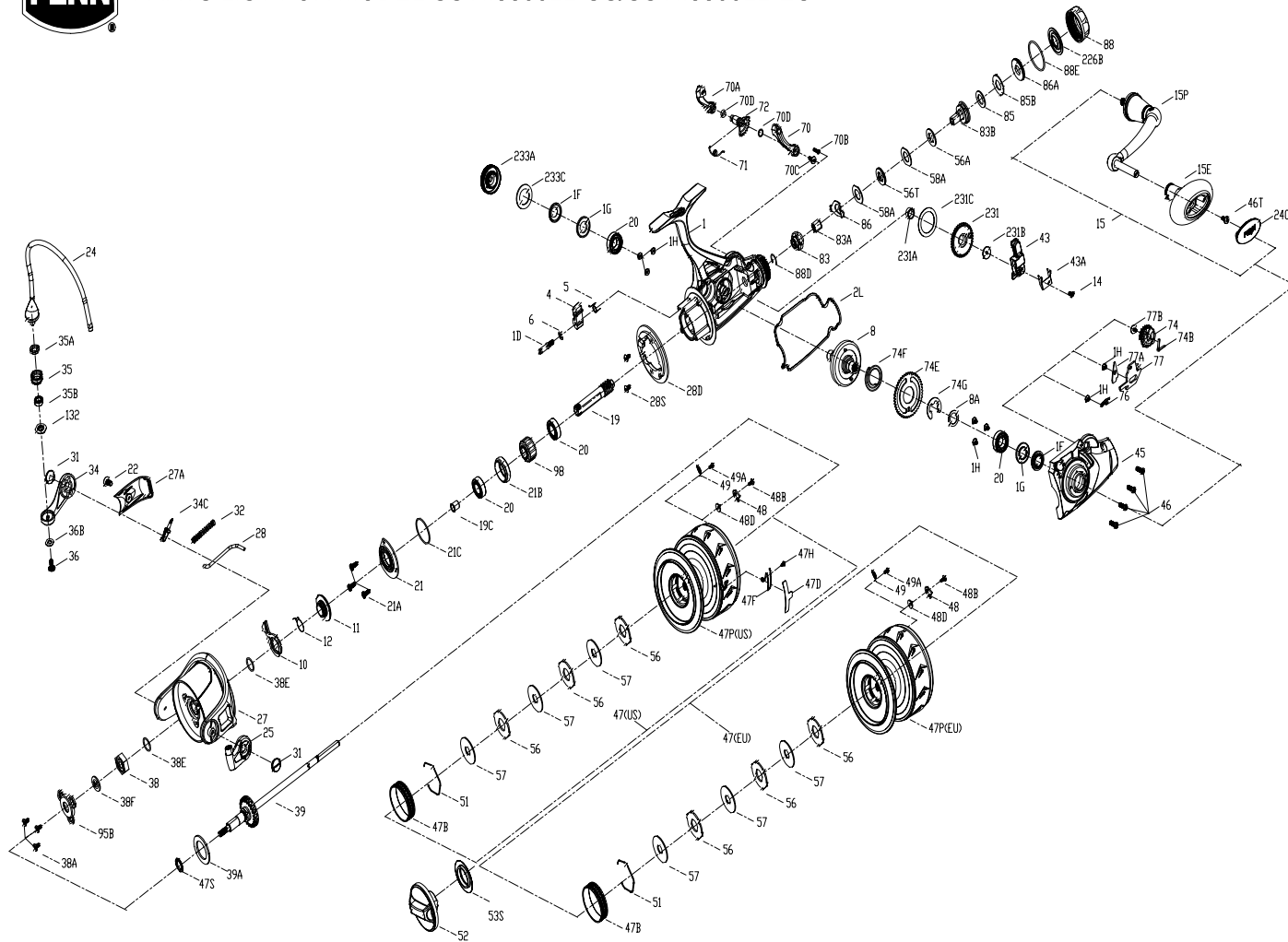




PARTS LIST FOR MODEL SSVII8500LL-US/SSVII8500LL-EU



KEY NO.	PART NO.	PENN STYLE NO.	DESCRIPTION
28D	1277161	28D-SSV7500	Rotor Brake
28S	1277054	28S-SSV5500	Rotor Brake Screw
31	1277055	31-SSV5500	Screw
32	1277162	32-SSV7500	Bail Spring
34	1385667	34-CLA8000	Bail Arm
34C	1277164	34C-SSV7500	Pivot Arm
35	1457805	35-SLAI118500HS	Line Roller
35A	1457806	35A-SLAI118500HS	Line Roller Bushing
35B	1377606	35A-BTLI18000LC	Ball Bearing
36	1277166	36-SSV7500	Line Roller Screw
36B	1417809	36B-CLA6000	Bail Arm Screw Washer
38	1419103	38-SLA7500	Rotor Nut
38A	1277044	21A-SSV5500	Screw
38E	1302502	232B-SSV3500	Pinion Gear Seal
38F	1419080	38F-SLA7500	Rotor-Main Shaft Seal
39	1494803	39-SSVI8500LL	Main Shaft Assembly
39A	1494758	39A-SSVI6500LL	Washer
43	1494804	43-SSVI8500LL	Slider
43A	1494805	43A-SSVI8500LL	Slider Guide
45	1494806	45-SSVI8500LL	Body Cover Assembly
46	1277074	46-SSV5500	Screw
46T	1494762	46T-SSVI6500LL	Screw
47	1611023	47-SSVI18500LL-US	Spool Assembly
47	1612636	47-SSVI18500LL-EU	Spool Assembly
47B	1277076	47B-SSV5500	Spool Band
47D	1611026	47D-SSVI16500LL	Line Clip
47F	1611027	47F-SSVI16500LL	Line Clip Retainer
47H	1612635	47H-SSVI16500LL	Spool Click Spring Screw
47P	1611024	47P-SSVI18500LL-US	Spool
47P	1612637	47P-SSVI18500LL-EU	Spool
47S	1494699	47S-SSVI2500LL	Seal
48	1385578	48-CLA3000	Spool Click Plate
48B	1385581	48B-CLA3000	Screw
48D	1385579	48D-CLA3000	Spool Clicker Spacer Ring
49	1385580	49-CLA3000	Spool Click Spring
49A	1341547	49A-SSV7500LC	Screw
51	1447925	51-CFTI15000	Drag Washer Retainer
52	1494809	52-SSVI18500LL	Drag Knob Assembly
53S	1447927	53S-CFTI15000	Drag Knob Seal
56	1339557	56-CLA5000	Drag Friction Washer
56A	1494767	56A-SSVI6500LL	Friction Washer
56T	1494768	56T-SSVI6500LL	Drag Washer
57	1339558	57-CLA5000	Keyed Drag Washer
58A	1494769	58A-SSVI6500LL	Eared Washer
70	1494770	70-SSVI6500LL	Lever Left
70A	1494771	70A-SSVI6500LL	Lever Right
70B	1277128	70B-SSV6500LL	Screw
70C	1277003	70C-SSV4500LL	Screw
70D	1494708	70D-SSVI2500LL	O-Ring
71	1494772	71-SSVI6500LL	Spring
72	1494773	72-SSVI6500LL	Switch Cam
74	1494774	74-SSVI6500LL	Cam Gear
74B	1494775	74B-SSVI6500LL	Spring
74E	1494810	74E-SSVI8500LL	Gear
74F	1494811	74F-SSVI8500LL	Gear Spring
74G	1277014	74G-SSV4500LL	Live Liner Three Pawl Lever E-Clip
76	1494778	76-SSVI6500LL	Spring
77	1494812	77-SSVI8500LL	Stop Claw
77A	1494813	77A-SSVI8500LL	Plate
77B	1496533	22A-SLA7500	Screw
83	1496528	83-SSVI8500LL	Ratchet
83A	1496529	83A-SSVI8500LL	Bushing
83B	1494782	83B-SSVI6500LL	Support Assembly
85	1494783	85-SSVI6500LL	Friction Washer
85B	1494784	85B-SSVI6500LL	Eared Washer
86	1494785	86-SSVI6500LL	Spring
86A	1494786	86A-SSVI6500LL	Nut
88	1611030	88-SSVI16500LL	Knob
88D	1500157	88D-SSVI8500LL	Retainer
88E	1494789	88E-SSVI6500LL	O-Ring
95B	1419114	95B-SLA7500	Rotor Nut Locking Plate
98	1277190	98-SSV7500	One Way Clutch Bearing Assembly
132	1457807	132-SLAI118500HS	Line Roller Collar
226B	1494790	226B-SSVI6500LL	Seal
231	1419117	231-SLA7500	O/S Gear
231A	1494814	231A-SSVI8500LL	O/S Gear Bushing
231B	1277100	231B-SSV5500	O/S Gear Screw
231C	1494815	231C-SSVI8500LL	O/S Gear Washer
233A	1419118	233A-SLA7500	Handle Cap Assembly
233C	1419076	233C-SLA5500	Handle Cap Seal
15E	1494795	15E-SSVI8500LL	Handle Knob
15P	1494796	15P-SSVI8500LL	Sub-Handle Assembly
19	1494797	19-SSVI8500LL	Pinion Gear
19C	1419092	19C-SLA7500	Pinion Gear Bushing
20	1277152	20A-SSV7500	Ball Bearing
21	1419093	21-SLA7500	Ball Bearing Retainer
21A	1277154	21A-SSV7500	Screw
21B	1419094	21B-SLA7500	Pinion Bearing Collar
21C	1385684	21C-CLA8000	O Ring
22	1277046	22-SSV5500	Rotor Cover Screw
24	1494798	24-SSVI8500LL	Bail Assembly
24C	1494799	24C-SSVI8500LL	Handle Knob Cap
25	1385663	25-CLA8000	Bail Holder
27	1494800	27-SSVI8500LL	Rotor
27A	1494801	27A-SSVI8500LL	Rotor Cover
28	1494802	28-SSVI8500LL	Rotor Trip Lever

407-SSVII8500LL
Rev. 00 06-8-2023
1594612 SSVII85LL-US
1612611 SSVII85LL-EU

KEY NO.	PART NO.	PENN STYLE NO.	DESCRIPTION
1	1611022	1-SSVII8500LL	Body Assembly
1D	1277140	1D-SSV7500	A/R Pawl Post
1F	1419083	1F-SLA7500	Body Side Seal
1G	1419082	1G-SLA7500	Body Side Seal Lock Plate
1H	1418957	1H-SLA3500	Body Side Screw
2L	1494792	2L-SSVI8500LL	Body Seal
4	1277142	4-SSV7500	A/R Pawl
5	1277143	5-SSV7500	Pawl Spring
6	1277144	6-SSV7500	Retainer Clip
8	1494793	8-SSVI8500LL	Drive Gear Assembly
8A	1277037	8A-SSV5500	Drive Gear Shim Washer
10	1277147	10-SSV7500	A/R Pawl Holder
11	1419088	11-SLA7500	A/R Bushing
12	1339487	12-CLA5000	A/R Bushing Spring
14	1276992	14-SSV6500LL	O/S Slider Retainer Screw
15	1494794	15-SSVI8500LL	Handle Assembly

KEY NO.	PART NO.	PENN STYLE NO.	DESCRIPTION
15E	1494795	15E-SSVI8500LL	Handle Knob
15P	1494796	15P-SSVI8500LL	Sub-Handle Assembly
19	1494797	19-SSVI8500LL	Pinion Gear
19C	1419092	19C-SLA7500	Pinion Gear Bushing
20	1277152	20A-SSV7500	Ball Bearing
21	1419093	21-SLA7500	Ball Bearing Retainer
21A	1277154	21A-SSV7500	Screw
21B	1419094	21B-SLA7500	Pinion Bearing Collar
21C	1385684	21C-CLA8000	O Ring
22	1277046	22-SSV5500	Rotor Cover Screw
24	1494798	24-SSVI8500LL	Bail Assembly
24C	1494799	24C-SSVI8500LL	Handle Knob Cap
25	1385663	25-CLA8000	Bail Holder
27	1494800	27-SSVI8500LL	Rotor
27A	1494801	27A-SSVI8500LL	Rotor Cover
28	1494802	28-SSVI8500LL	Rotor Trip Lever