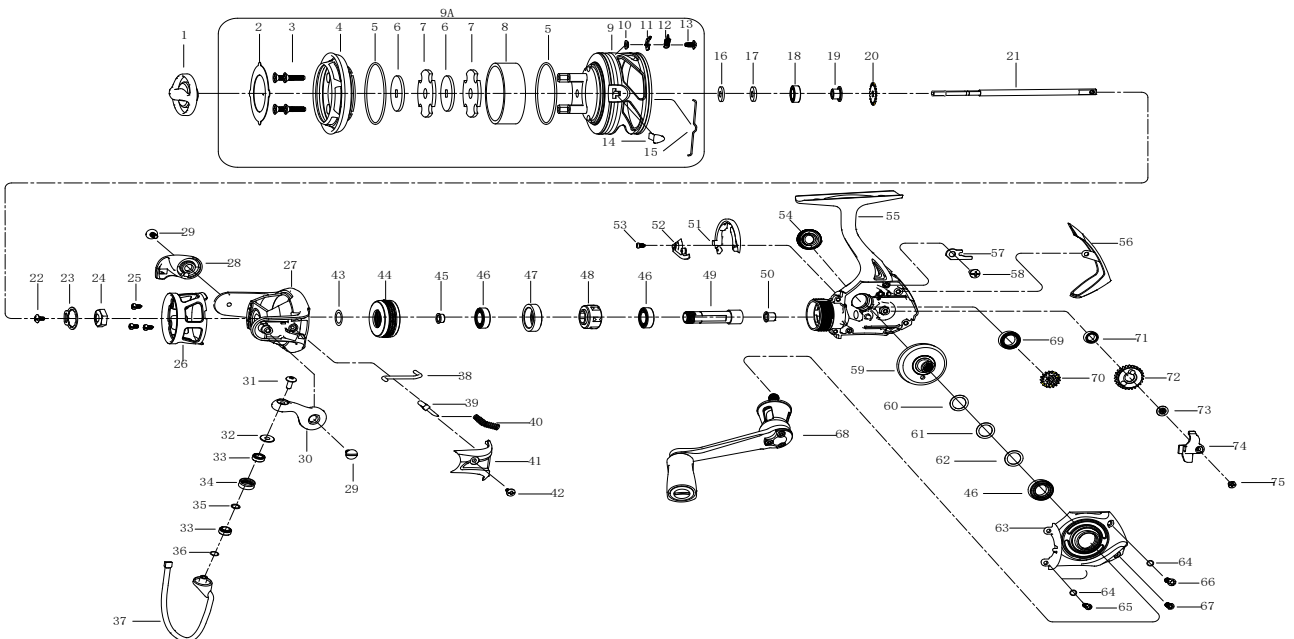


## MODEL : PFL SP PARSP25X

ITEM	DESCRIPTION	PART NO		ITEM	DESCRIPTION	PART NO
1	DRAG KNOB ASSY	1417515		38	TRIP PLUNGER	1563804
2	CARBON PLATE	1587187		39	BAIL ARM GUIDE	1201836
3	SCREW (4 REQ)	1205814		40	BAIL ARM SPRING	1201835
4	SPOOL RING	1587188		41	BAIL ARM COVER	1587337
5	SEAL RING (2 REQ)	1378767		42	SCREW	1563774
6	D DRAG WASHER (2 REQ)	1216514		43	CLUTCH WASHER	1207340
7	CARBON DRAG WASHER (2 REQ)	1216515		44	PINION NUT COVER	1587338
8	CARBON SPOOL NECK	1587329		45	BUSHING	1404814
9	SPOOL	1587330		46	BEARING (3 REQ)	1200801
9A	SPOOL ASSY	1587331		47	BEARING SLEEVE	1417459
10	CLICK SPACER	1216524		48	ONE WAY CLUTCH	1417460
11	CLICK PAWL	1216525		49	PINION GEAR	1587339
12	SPOOL CLICK SPRING	1214415		50	BUSHING	1200797
13	SCREW	1214413		51	ROTOR BRAKE	1241751
14	LINE CLIP	1216522		52	TRIP RAMP	1417463
15	LINE CLIP SPRING	1216523		53	SCREW	1359885
16	PTFE WASHER	1201817		54	DUST CAP ASSY	1587340
17	WASHER	1200772		55	BODY ASSY	1587341
18	BALL BEARING	1200773		56	REAR COVER	1577231
19	BEARING SLEEVE	1216527		57	O/S SLIDER PLATE	1220303
20	CLICK RATCHET	1201821		58	SCREW	1201877
21	MAIN SHAFT	1587332		59	DRIVE GEAR	1577211
22	SCREW	1516884		60	5CWASHER	1200878
23	LOCK WASHER	1200795		61	10CWASHER	1200876
24	ROTOR NUT	1209631		62	20CWASHER	1200798
25	SCREW (3 REQ)	1207341		63	BODY COVER ASSY	1587342
26	ROTOR SLEEVE	1587333		64	WASHER (3 REQ)	1201870
27	ROTOR	1587334		65	SCREW (2 REQ)	1361051
28	BAIL HOLDER	1587335		66	SCREW	1563782
29	SCREW (2 REQ)	1563407		67	SCREW	1216637
30	BAIL ARM	1587336		68	HANDLE ARM ASSY	1587343
31	SCREW	1205887		69	BALL BEARING	1226638
32	LINE ROLLER COLLAR	1577239		70	TRANSFER GEAR	1417469
33	BEARING (2 REQ)	1564241		71	BALL BEARING	1564250
34	LINE ROLLER	1378785		72	O/S GEAR	1587344
35	LINE SLIDER WASHER	1378786		73	SCREW	1563811
36	SHIM	1378784		74	O/S SLIDER	1201874
37	BAIL WIRE ASSY	1564285		75	SCREW	1201875

### EXPLODED VIEW



PFL SP PARSP25X 00