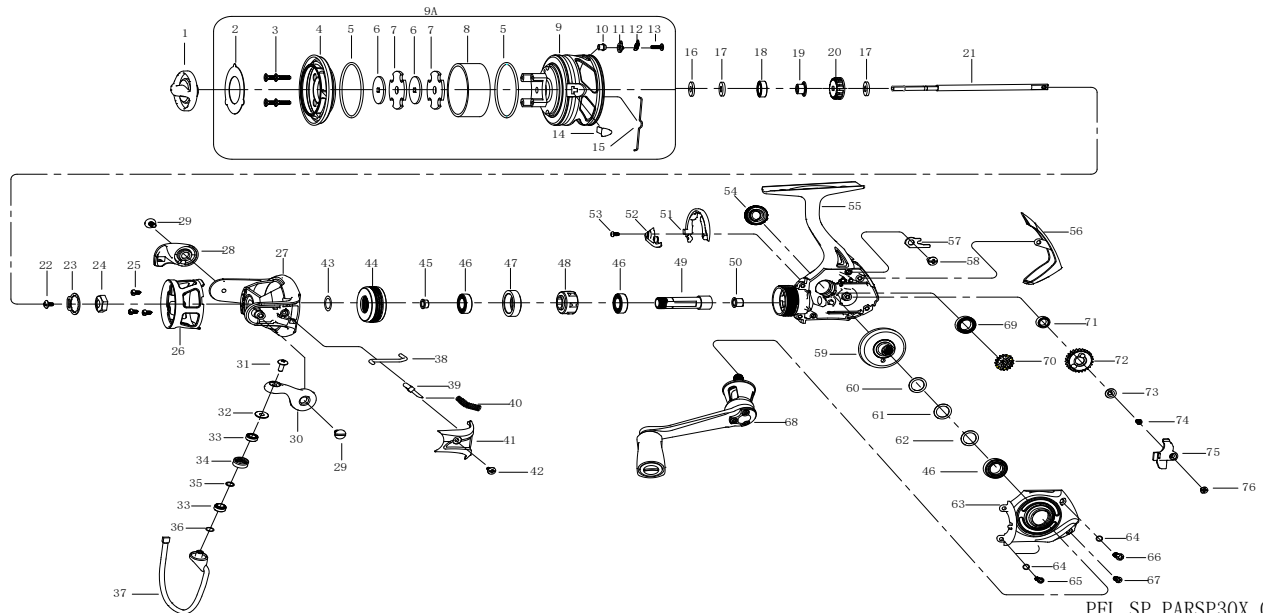


MODEL:PFL SP PARSP30X

ITEM	DESCRIPTION	PART NO	ITEM	DESCRIPTION	PART NO
1	DRAG KNOB ASSY	1417446	39	BAIL ARM GUIDE	1201836
2	CARBON PLATE	1587345	40	BAIL ARM SPRING	1201835
3	SCREW(4 REQ)	1205814	41	BAIL ARM COVER	1587356
4	SPOOL RING	1587346	42	SCREW	1563774
5	SEAL RING(2 REQ)	1361024	43	CLUTCH WASHER	1205956
6	D DRAG WASHER(2 REQ)	1216514	44	PINION NUT COVER	1587338
7	CARBON DRAG WASHER(2 REQ)	1216620	45	BUSHING	1225190
8	CARBON SPOOL NECK	1587347	46	BEARING(3 REQ)	1200801
9	SPOOL	1587348	47	BEARING SLEEVE	1417459
9A	SPOOL ASSY	1587349	48	ONE WAY CLUTCH	1417460
10	CLICK SPACER	1587350	49	PINION GEAR	1587357
11	CLICK PAWL	1241707	50	BUSHING	1200797
12	SPOOL CLICK SPRING	1214415	51	ROTOR BRAKE	1241751
13	SCREW	1587351	52	TRIP RAMP	1417463
14	LINE CLIP	1216522	53	SCREW	1359885
15	LINE CLIP SPRING	1216627	54	DUST CAP ASSY	1587340
16	PTFE WASHER	1201817	55	BODY ASSY	1587358
17	WASHER(2 REQ)	1200772	56	REAR COVER	1577231
18	BALL BEARING	1200773	57	O/S SLIDER PLATE	1220303
19	BEARING SLEEVE	1216527	58	SCREW	1201877
20	CLICK RATCHET	1241740	59	DRIVE GEAR	1577211
21	MAIN SHAFT	1587352	60	5CWASHER	1200878
22	SCREW	1516884	61	10CWASHER	1200876
23	LOCK WASHER	1587353	62	20CWASHER	1200798
24	ROTOR NUT	1361049	63	BODY COVER ASSY	1587359
25	SCREW(3 REQ)	1516884	64	WASHER(3 REQ)	1201870
26	ROTOR SLEEVE	1587354	65	SCREW(2 REQ)	1361051
27	ROTOR	1587355	66	SCREW	1563782
28	BAIL HOLDER	1587335	67	SCREW	1216637
29	SCREW(2 REQ)	1563407	68	HANDLE ARM ASSY	1587343
30	BAIL ARM	1587336	69	BALL BEARING	1226638
31	SCREW	1205887	70	TRANSFER GEAR	1417469
32	LINE ROLLER COLLAR	1563802	71	BALL BEARING	1564250
33	BEARING(2 REQ)	1564241	72	O/S GEAR	1587360
34	LINE ROLLER	1378785	73	O/S GEAR WASHER	1216641
35	LINE SLIDER WASHER	1378786	74	SCREW	1216640
36	SHIM	1378784	75	O/S SLIDER	1201874
37	BAIL WIRE ASSY	1564270	76	SCREW	1201875
38	TRIP PLUNGER	1563819	76		

EXPLODED VIEW



PFL SP PARSP30X 00