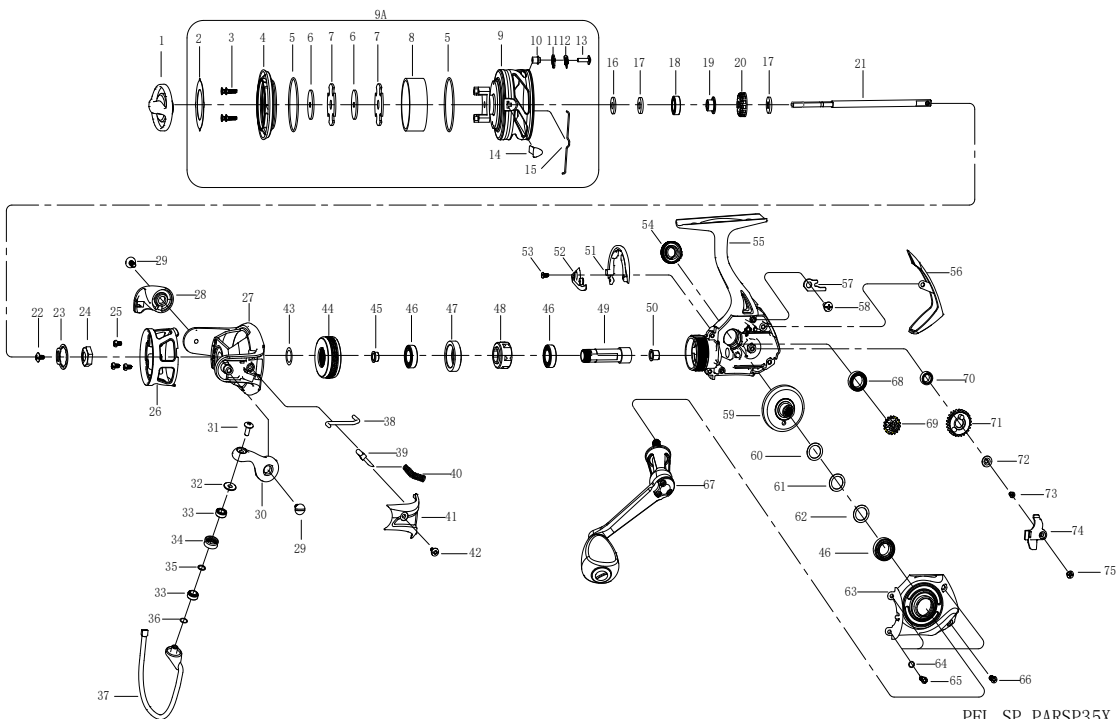


MODEL:PFL SP PARSP35X

| ITEM | DESCRIPTION                | PART NO | ITEM | DESCRIPTION      | PART NO |
|------|----------------------------|---------|------|------------------|---------|
| 1    | DRAG KNOB ASSY             | 1361022 | 38   | TRIP PLUNGER     | 1563790 |
| 2    | CARBON PLATE               | 1587361 | 39   | BAIL ARM GUIDE   | 1563772 |
| 3    | SCREW (4 REQ)              | 1205814 | 40   | BAIL ARM SPRING  | 1201763 |
| 4    | SPOOL RING                 | 1587362 | 41   | BAIL ARM COVER   | 1587371 |
| 5    | SEAL RING (2 REQ)          | 1361024 | 42   | SCREW            | 1563774 |
| 6    | D DRAG WASHER (2 REQ)      | 1216560 | 43   | CLUTCH WASHER    | 1205956 |
| 7    | CARBON DRAG WASHER (2 REQ) | 1216561 | 44   | PINION NUT COVER | 1587338 |
| 8    | CARBON SPOOL NECK          | 1587363 | 45   | BUSHING          | 1225178 |
| 9    | SPOOL                      | 1587364 | 46   | BEARING (3 REQ)  | 1200801 |
| 9A   | SPOOL ASSY                 | 1587365 | 47   | BEARING SLEEVE   | 1417459 |
| 10   | CLICK SPACER               | 1361028 | 48   | ONE WAY CLUTCH   | 1380299 |
| 11   | CLICK PAWL                 | 1241707 | 49   | PINION GEAR      | 1587372 |
| 12   | SPOOL CLICK SPRING         | 1214415 | 50   | BUSHING          | 1205958 |
| 13   | SCREW                      | 1258432 | 51   | ROTOR BRAKE      | 1216579 |
| 14   | LINE CLIP                  | 1216522 | 52   | TRIP RAMP        | 1201784 |
| 15   | LINE CLIP SPRING           | 1216569 | 53   | SCREW            | 1201853 |
| 16   | PTFE WASHER                | 1201745 | 54   | DUST CAP ASSY    | 1587340 |
| 17   | WASHER (2 REQ)             | 1200833 | 55   | BODY ASSY        | 1587373 |
| 18   | BALL BEARING               | 1200773 | 56   | REAR COVER       | 1577254 |
| 19   | BEARING SLEEVE             | 1216571 | 57   | O/S SLIDER PLATE | 1216586 |
| 20   | CLICK RATCHET              | 1241708 | 58   | SCREW            | 1201877 |
| 21   | MAIN SHAFT                 | 1587366 | 59   | DRIVE GEAR       | 1577211 |
| 22   | SCREW                      | 1200794 | 60   | 5CWASHER         | 1200878 |
| 23   | LOCK WASHER                | 1200795 | 61   | 10CWASHER        | 1200876 |
| 24   | ROTOR NUT                  | 1201771 | 62   | 20CWASHER        | 1200798 |
| 25   | SCREW (3 REQ)              | 1378803 | 63   | BODY COVER ASSY  | 1587374 |
| 26   | ROTOR SLEEVE               | 1587367 | 64   | WASHER (3 REQ)   | 1201870 |
| 27   | ROTOR SUB-ASSY             | 1587368 | 65   | SCREW (3 REQ)    | 1563782 |
| 28   | BAIL HOLDER                | 1587369 | 66   | SCREW            | 1216637 |
| 29   | SCREW (2 REQ)              | 1563407 | 67   | HANDLE ARM ASSY  | 1587375 |
| 30   | BAIL ARM                   | 1587370 | 68   | BALL BEARING     | 1226638 |
| 31   | SCREW                      | 1205887 | 69   | TRANSFER GEAR    | 1437170 |
| 32   | LINE ROLLER COLLAR         | 1378787 | 70   | BALL BEARING     | 1564250 |
| 33   | BEARING (2 REQ)            | 1564241 | 71   | O/S GEAR         | 1587376 |
| 34   | LINE ROLLER                | 1378785 | 72   | O/S GEAR WASHER  | 1216641 |
| 35   | LINE SLIDER WASHER         | 1378786 | 73   | SCREW            | 1216640 |
| 36   | SHIM                       | 1378784 | 74   | O/S SLIDER       | 1216583 |
| 37   | BAIL WIRE ASSY             | 1564242 | 75   | SCREW            | 1201875 |

EXPLODED VIEW



PFL SP PARSP35X 00