

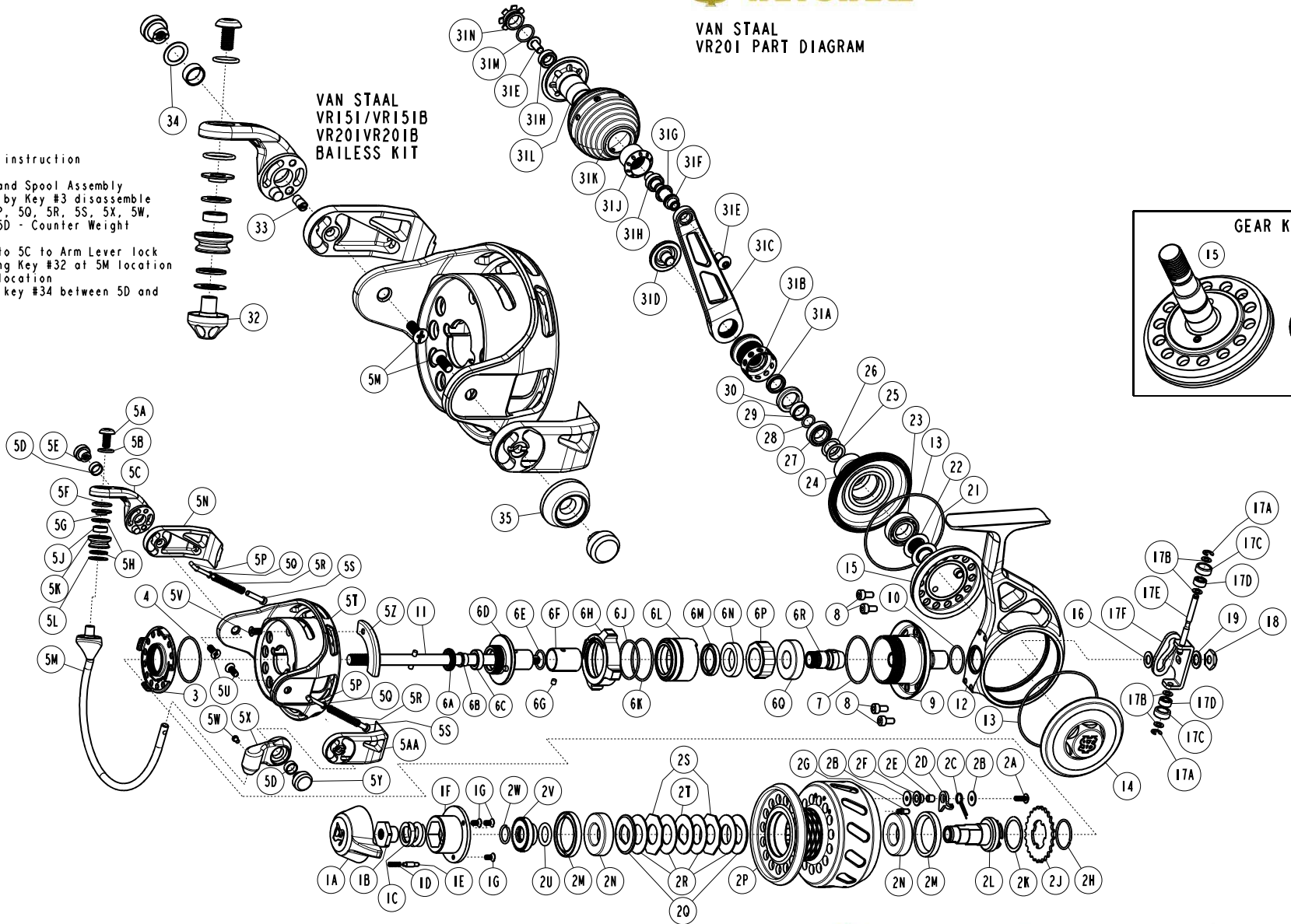
VAN STAAL

VAN STAAL
VR201 PART DIAGRAM

VAN STAAL
VR151/VR151B
VR201VR201B
BAILESS KIT

Bailess Kit Assembly instruction

- 1) Disassemble Drag and Spool Assembly
- 2) Disassemble Rotor by Key #3 disassemble
- 3) Remove key #5M, 5P, 5Q, 5R, 5S, 5X, 5W, 5V, 5Z, 5U, and 5D (5D - Counter Weight Side only)
- 4) Assemble Key #33 to 5C to Arm Lever lock
- 5) Assemble Back using Key #32 at 5M location And key #35 to 5X location
- 6) Add Spacer Washer key #34 between 5D and 5E



WARNING: Cancer and Reproductive Harm – www.P65Warnings.ca.gov

Van Staal VR201 Part List

Key No.	Description	Part No.		Q'TY	Key No.	Description	Part No.		Q'TY
		SAP No.	VR201				SAP No.	VR201	
1	Drag Knob Assembly include	1558199	VR332-82	1	6G	Clutch Sleeve Pin	1535044	VR149-01	1
	1A - Drag Knob	1558185	VR032-82	1	6H	Lock Ring	1579967	VS122-03	1
	1B - Drag Nut	1577305	VS066-01	1	6J	Clutch Housing O-Ring "B"	1534524	ORR8	1
	1C - Drag Spring	1534950	VBQ043-01	1	6K	Clutch Housing O-Ring "A"	1535166	VSB1591	1
	1D - Drag Click Spring	1534550	SH049-01	1	6L	Clutch Housing	1535011	VR038-01	1
	1E - Drag Click Pawl	1534964	VBQ149-01	1	6M	Main Seal	1535348	VR252-02	1
	1F - Drag Knob Cap	1534956	VBQ071-01	1	6N	Clutch Support Bearing	1534402	BGRS5	1
	1G - Drag Knob Cap Screw	1534506	HX107-04	3	6P	One Way Clutch	1535349	VR063-02	1
2	Spool Assembly (Kit) include	1569483	VR321-93	1	6Q	Pinion Gear Ball Bearing	1538484	BGR02	1
	2A - Spool Click Pawl Screw	1534536	QW053-10	1	7	Lock Ring O-Ring	1535034	VR101-01	1
	2B - Spool Clicker Washer	1534957	VBQ076-01	2	8	Body Neck Screw	1535018	VR054-01	4
	2C - Spool Click Pawl Spring	1534955	VBQ068-01	1	9	Body Neck Assembly	1579989	VR341-03	1
	2D - Spool Click Pawl	1587392	VS103-02	1	10	Body Neck O-Ring	1535047	VR164-01	1
	2E - Spool Clicker Holder	1534961	VBQ122-01	1	11	Spool Shaft Assembly	1558223	VS315-01	1
	2F - Spool Click Collar	1534963	VBQ141-01	1	12	Body	1558168	VR001-52	1
	2G - Spool Click Spring Pin	1534960	VBQ114-01	1	13	Body Cover O-Ring	1535087	VS145-01	2
	2H - Spool Click Ratchet Holding Ring	1577307	VS036-01	1	14	Service Cover	1579993	VR024-03	1
	2J - Spool Click Ratchet	1577308	VS037-01	1		Gear Kit	1558220	VRL4312-01	1
	2K - Ratchet Spacer Washer	1577309	VR035-01	1		6R - Pinion Gear Assembly			
	2L - Spool Hub	1558222	VS213-01	1		15 - Drive Gear Assembly			
	2M - Drag Seal	1534529	OSPR3	2	16	Spool Shaft Spacer	1535006	VR026-01	1
	2N - Spool Ball Bearing	1534401	BGRS3	2	17	O/S Slider Assembly (Kit) include	1535065	VR4025-01	1
	2P - Spool	1569484	VR021-93	1	17A	E-Clip	1534512	NX092-01	2
	2Q - Drag "D" Washer - Chamfered	1558164	VP080-01	2	17B	O/S Slider Bearing Spacer	1535007	VR029-01	4
	2R - Drag Disc	1558163	VP039-01	4	17C	O/S Slider Bearing Wear Ring	1535038	VR106-01	2
	2S - Drag Octagon Washer	1558165	VP081-01	2	17D	O/S Slider Bearing	1535352	XX117-03	2
	2T - Drag "D" Washer	1558186	VR045-01	1	17E	O/S Slider Bearing Shaft	1535041	VR115-01	1
	2U - Spool Retainer O-Ring	1534519	ORR3	1	17F	O/S Slider	1535005	VR025-01	1
	2V - Spool Retainer	1535191	VSB2024-B	1	18	M5x0.8 Hex Nut	1534993	VR014-01	1
	2W - Spool Retainer Ring	1534872	SR3041	1	19	Teeth Washer	1535239	WSLCIT1	1
3	Rotor Nut	1558171	VR006-03	1	21	Drive Gear Adjust Washer	1534480	DF035-02	0
4	Rotor Nut O-Ring	1535042	VR145-01	1	22	Drive Gear Adjust Washer	1534481	DF035-05	0
5	Rotor Assembly (Kit) include	1558218	VRL4009-30	1	23	Gear Bearing	1553415	CF017-05	1
	5A - Line Slider Screw	1535039	VR108-01	1	24	Body Cover	1579995	VR023-03	1
	5B - Line Slider Screw O-Ring	1535091	VS164-01	1	25	Body Cover Ball Bearing Adjust Washer	1535029	VR084-01	0
	5C - Bail Arm Lever	1558206	VRL007-01	1	26	Body Cover Ball Bearing Adjust Washer	1535030	VR084-02	0
	5D - Arm Lever Bushing	1535045	VR158-01	2	27	Body Cover Ball Bearing	1535249	TW058-06	1
	5E - Arm Lever Cap	1535040	VR113-01	1	28	Handle Sleeve O-Ring	1535033	VR098-01	1
	5F - Arm Lever O-Ring	1535079	VS101-01	1	29	Handle Sleeve	1535085	VS110-01	1
	5G - Line Roller Spacer "A"	1534995	VR016-01	1	30	Gear Shaft Seal	1535084	VS109-01	1
	5H - Line Roller Seal	1535050	VR262-01	2	31	Handle Assembly include	1579997	VR318-03	1
	5J - Line Roller Ball Bearing	1553416	CT157-06	1		31A - Handle Stand Insert	1535090	VS158-01	1
	5K - Line Roller	1534986	VR004-01	1		31B - Handle Stand	1579999	VS058-04	1
	5L - Line Roller Spacer "B"	1535035	VR102-01	1		31C - Handle Arm	1580001	VR018-03	1
	5M - Bail Assembly	1558214	VRL347-30	1		31D - Handle Cap	1535351	VS054-02	1
	5N - Bail Spring Cover Support	1558210	VRL046-01	1		31E - Handle Knob Screw	1580003	VR077-02	2
	5P - Bail Spring Link	1535072	VS095-01	2		31F - Handle Knob Shaft	1580004	VR005-02	1
	5Q - Bail Spring Spacer	1535014	VR048-01	2		31G - Handle Knob Seal	1535050	VR262-01	1
	5R - Bail Spring	1535002	VR022-01	2		31H - Handle Knob Ball Bearing	1535272	VR028-02	2
	5S - Bail Spring Pivot	1535032	VR095-01	2		31J - Handle Knob Nut	1535066	VS014-01	1
	5T - Rotor	1534991	VR009-30	1		31K - Handle Knob	1534992	VR013-01	1
	5U - Bail Spring Cover Screw	1535019	VR057-01	2		31L - Handle Knob Hub	1534985	VR003-01	1
	5V - Counter Weight Screw	1535020	VR057-02	1		31M - Handle Knob Cap O-Ring	1535079	VS101-01	1
	5W - Bail Holder Screw	1535017	VR051-01	1		31N - Handle Knob Cap	1535024	VR073-01	1
	5X - Bail Holder	1579963	VRL017-11	1		Wrench - Service Cover	1535462	VR170-01	1
	5Y - Bail Holder Cap	1535086	VS113-01	1					
	5Z - Counter Weight	1535043	VR148-01	1					
	5AA - Bail Spring Cover Support	1535013	VR046-01	1		Bailless Kit	1577324	VR4010-01	1
6A	Spool Shaft Guide Seal	1535345	VR171-10	1	32	Line Slider - Bailless	1538578	VS010-01	1
6B	Spool Shaft Bearing Bushing	1535049	VR259-01	1	33	Arm Lever Locking Pin	1535031	VR085-01	1
6C	Spool Shaft Bearing	1535355	CH027-06	1	34	Arm Lever Spacer Washer	1538570	VR109-01	1
6D	Spool Shaft Guide Assembly	1579965	VR375-03	1	35	Balancer	1538579	VS017-01	1
6E	Spool Shaft Guide O-Ring	1535079	VS101-01	1	5U	Bail Spring Cover Screw	1535019	VR057-01	2
6F	Clutch Sleeve	1535346	VR139-02	1					