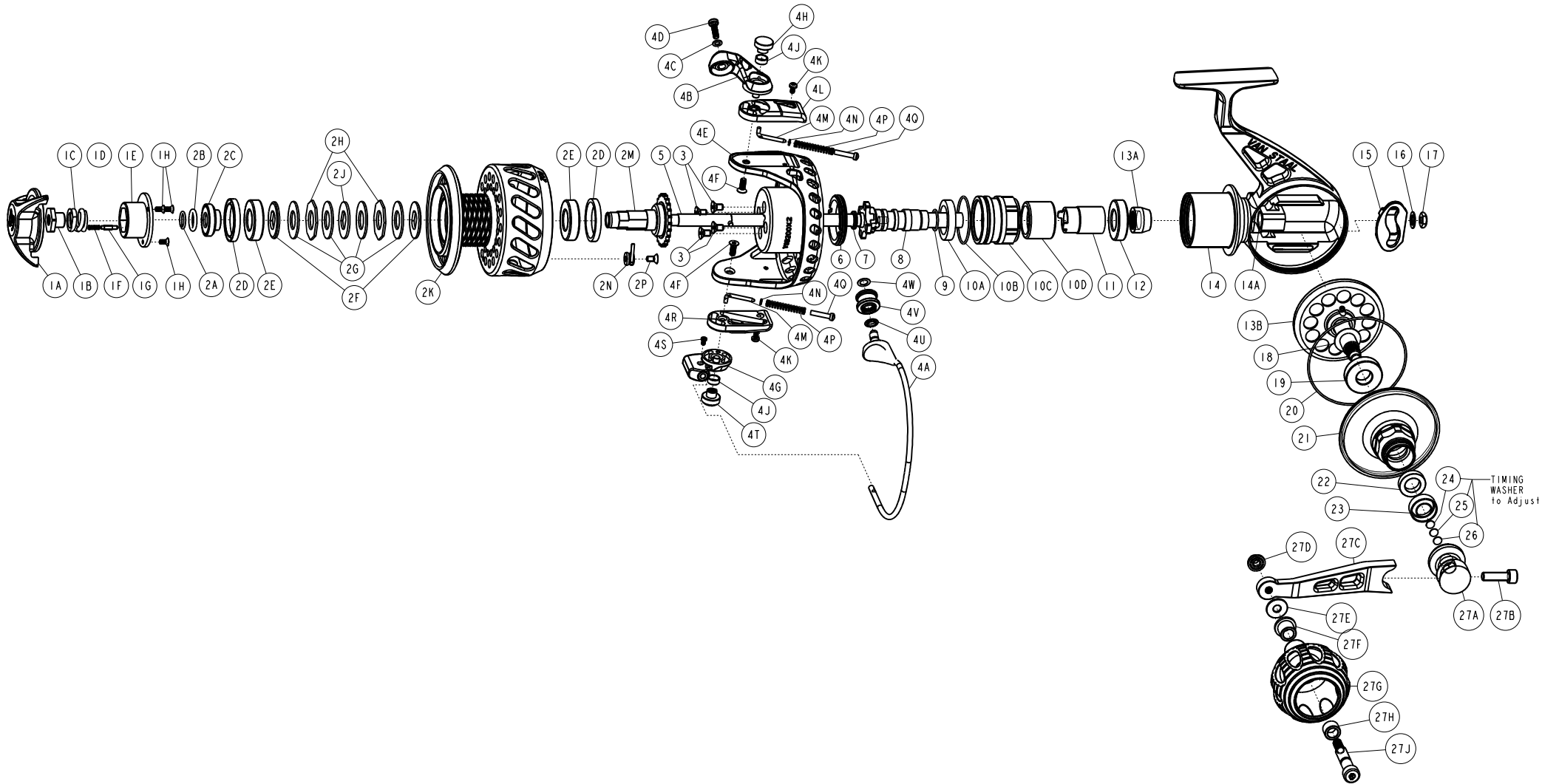


**VAN STAAL**  
**VAN STAAL**  
**VSB150RX2**  
**COMPONENT DIAGRAM**



**WARNING:** Cancer and Reproductive Harm – [www.P65Warnings.ca.gov](http://www.P65Warnings.ca.gov)

### Van Staal VSB150BX2 Part List

Key No.	Description	Part No.		Q'TY	Key No.	Description	Part No.		Q'TY
		SAP#	VSB150BX2				SAP#	VSB150BX2	
1	Drag Knob Assembly (Kit)	1538693	VS41006-02	1	4V	Line Roller Assembly	1535223	VSB3120-1	1
1A	Drag Knob	1601325	VS1006-11	1	4W	Line Roller Adj Washer - 0.1	1547221	PAB035-03	1
1B	Drag Nut	1535082	VS1027-01	1		Line Roller Adj Washer - 0.3	1547222	PAB035-04	1
1C	Drag Spring	1535083	VS1054-01	1	5	Spool Shaft Assembly	1564512	VSD315-01	1
1D	Drag Knob Washer	1538580	VS035-01	1	6	Lock Ring	1564450	VSD122-01	1
1E	Drag Knob Cap	1535081	VS1026-01	1	7	Quad Seal	1534515	ORQ3	1
1F	Drag Click Spring	1535069	VS049-01	1	8	Spool Shaft Guide	1564513	VSD075-01	1
1G	Drag Click Pawl	1535089	VS149-01	1	9	Spool Shaft Guide O-Ring	1535091	VS164-01	1
1H	Drag Knob Cap Screw	1534542	SCFH15	3	10	Clutch Housing Assembly	1564487	VSD4038-01	1
2	Spool Assembly (Kit)	1564431	VSD321-01	1	10A	Clutch Housing Cup Seal	1534532	OSPR6	1
2A	Retainer Ring	1534634	SR1041	1	10B	Clutch Housing O-Ring	1534524	ORR8	1
2B	Spool Retainer O-Ring	1534516	ORR10	1	10C	Clutch Housing	1564488	(VSD038-01)	1
2C	Spool Retainer	1535137	VSB1024-B	1	10D	One Way Clutch	1535140	(VSB1090)	1
2D	Cup Seal	1534522	OSPR6	2	11	One Way Clutch Sleeve	1564489	VSD139-01	1
2E	Ball Bearing	1538474	CP058-03	2	12	Ball Bearing	1538473	DP058-02	1
2F	Drag "D" Washer - Chamfered	1534630	SR1036	2	13	Gear Kit	1564514	VSD4312-01	1
2G	Drag Disc	1534632	SR1038-1	4	13A	Pinion Gear		(SR1011)	1
2H	Drag Key Washer - Octagon	1534633	SR1039	2 (3)	13B	Main Gear Assembly		(VSD312-01)	1
2J	Drag "D" Washer	1534631	SR1037	1	14	Body Assembly	1564515	VSD301-01	1
2K	Spool	1564438	VSD021-01	1	14A	Body Bushing	1534618	SR1016-02	1
2L	Compensation Washer	1534643	SR1076	1	15	Travers Guide (O/S Slider)	1535080	VS1017-01	1
2M	Spool Hub	1535139	VSB1040	1	16	Internal Teeth Lock Washer	1535239	WSLCIT1	1
2N	Clicker Sub Assembly	1538523	SR1058-1	1	17	Spool Shaft Hex Nut	1534511	NTHX1	1
2P	Flat Socket Head Screw	1534543	SCFH2	1	18	Shim Washer - 0.002	1538529	SR1175	1
3	Rotor Screw	1534547	SCFH6	4		Shim Washer - 0.005	1538530	SR1275	1
4	Rotor Assembly (Kit)	1564392	VSE4009-01	1		Shim Washer - 0.010	1534648	SR1375	1
4A	Bail Assembly	1564396	VSE347-01	1	19	Drive Gear Ball Bearing	1534398	BGRS12-B	1
4B	Bail Arm Lever	1564400	VSE007-01	1	20	Body Cover O-Ring	1534525	ORR9	1
4C	Line Roller Screw Washer	1558224	VP067-01	1	21	Body Cover	1534524	VSD023-01	1
4D	Line Roller Screw	1538496	LF123-01	1	22	Body Cover Ball Bearing	1534403	BGRS90	1
4E	Rotor	1564401	VSE009-01	1	23	Body Cup Seal	1534531	OSPR5	1
4F	Arm Lever Cap Screw	1535019	VR057-01	2	24	Timing Washer 0.5	1543246	DA082-02	1
4G	Bail Holder	1564402	VSE017-01	1	25	Timing Washer 0.3	1543247	DA082-03	1
4H	Arm Lever Cap	1564403	VSE113-01	1	26	Timing Washer 0.1	1543248	DA082-04	1
4J	Arm Lever Bushing	1535045	VR158-01	2	27	Handle Assembly (Kit)	1564498	VSD318-01	1
4K	Arm Lever Cover Screw	1564404	VSE057-01	2	27A	Handle Hub (Stand)	1534612	SR1014B	1
4L	Arm Lever Cover	1564405	VSE046-01	1	27B	Handle Screw	1534548	SCSHC8	1
4M	Bail Spring Link	1535072	VS095-01	2	27C	Handle Arm	1564499	VSD018-01	1
4N	Bail Spring Spacer	1535014	VR048-01	2	27D	Handle Knob Bolt Nut	1534640	SR1060P	1
4P	Bail Spring	1535002	VR022-01	2	27E	Handle Washer	1534644	SR1078	1
4Q	Bail Spring Pivot	1535032	VR095-01	2	27F	Handle Knob Bushing - Flanged	1534629	SR1030	1
4R	Bail Holder Cover	1564406	VSE087-01	1	27G	Power Grip Handle Knob	1596548	SR1208-01	1
4S	Bail Holder Screw	1564407	VSE051-01	1	27H	Handle Knob Bushing - Plain	1534628	SR1029	1
4T	Bail Holder Cap	1535086	VS113-01	1	27J	Handle Knob Spindle	1535135	VSB1020-02	1
4U	Line Roller Seal	1564408	VSD109-01	1					