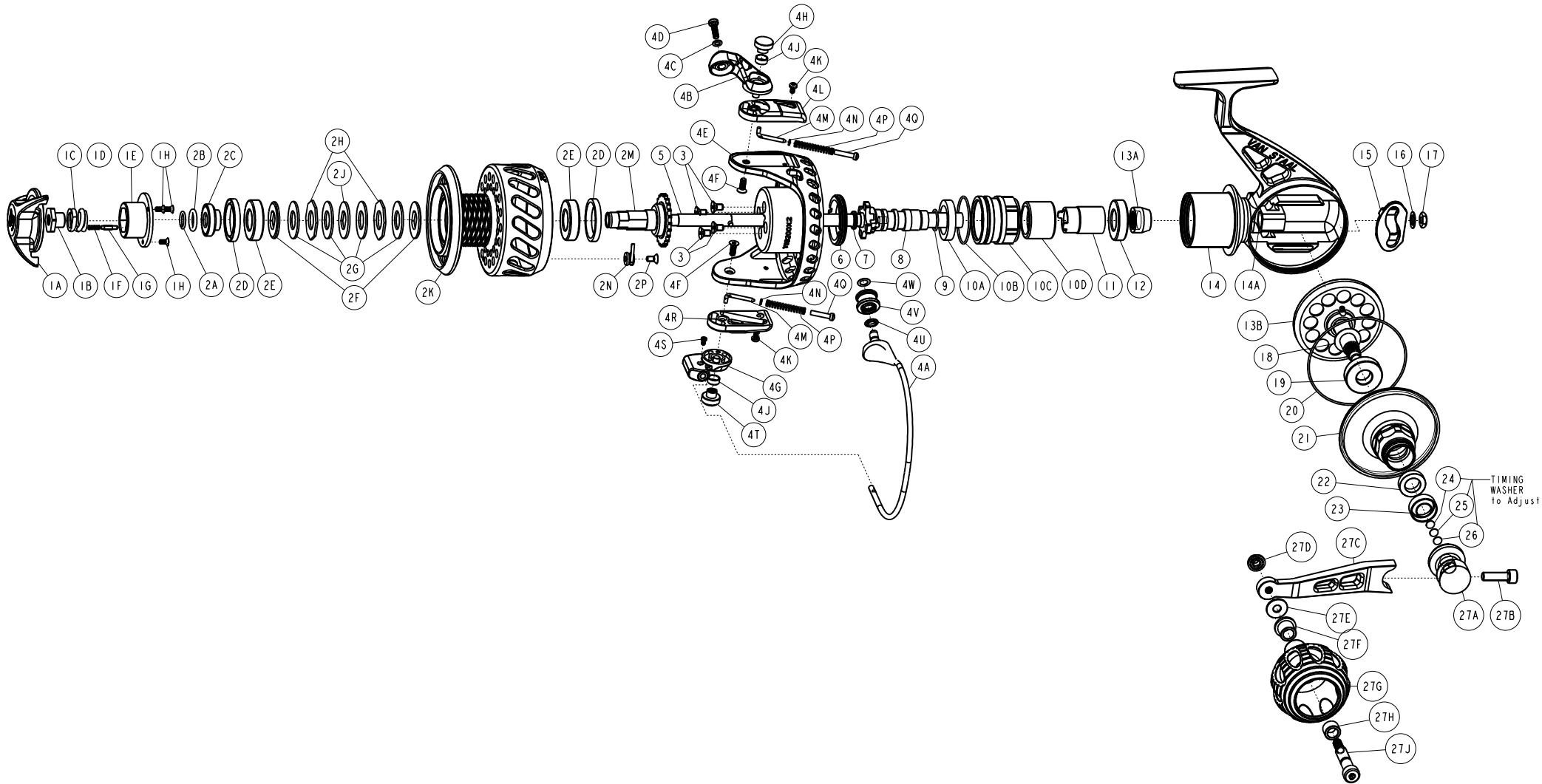


VAN STAAL
VAN STAAL
VSB200BX2
COMPONENT DIAGRAM



WARNING: Cancer and Reproductive Harm – www.P65Warnings.ca.gov

Van Staal VSB200BX2 Part List

Key No.	Description	Part No.		Q'TY	Key No.	Description	Part No.		Q'TY
		VSB200BX2	SAP#				VSB200BX2	SAP#	
1	Drag Knob Assembly (Kit)	VBQ332-11	1538694	1	4V	Line Roller Assembly	VSB3120-1	1535223	1
1A	Drag Knob	VBQ032-11	1601328	1	4W	Line Roller Adj Washer - 0.1	PAB035-03	1547221	1
1B	Drag Nut	VBQ066-01	1534954	1		Line Roller Adj Washer - 0.3	PAB035-04	1547222	1
1C	Drag Spring	VBQ043-01	1534950	1	5	Spool Shaft Assembly	VS2510-1	1605971	1
1D	Drag Knob Washer	N/A		1	6	Lock Ring	VSG122-01	1564546	1
1E	Drag Knob Cap	VBQ071-01	1534956	1	7	Quad Seal	ORQ2	1534514	1
1F	Drag Click Spring	SH049-01	1534550	1	8	Spool Shaft Guide	VSB2013	1538616	1
1G	Drag Click Pawl	VBQ149-01	1534964	1	9	Spool Shaft Guide O-Ring	ORR19	1534517	1
1H	Drag Knob Cap Screw	HX107-04	1534506	3	10	Clutch Housing Assembly	VSG4038-01	1564547	1
2	Spool Assembly (Kit)	VSG321-01	1564542	1	10A	Clutch Housing Cup Seal	OSPR1	1534526	1
2A	Retainer Ring	SR3041	1534872	1	10B	Clutch Housing O-Ring	ORR21	1538501	1
2B	Spool Retainer O-Ring	ORR3	1534519	1	10C	Clutch Housing	(VSG038-01)	1564548	1
2C	Spool Retainer	VSB2024-B	1535191	1	10D	One Way Clutch	(VSB2090)	1535194	1
2D	Cup Seal	OSPR3	1534529	2	11	One Way Clutch Sleeve	VSB2014	1535190	1
2E	Ball Bearing	BGRS3-B	1534401	2	12	Ball Bearing	BGRS3-B	1534401	1
2F	Drag "D" Washer - Chamfered	SR3036	1534867	2	13	Gear Kit	VSG4312-01	1564549	1
2G	Drag Disc	SR3038	1534869	4	13A	Pinion Gear	(SR2011)		1
2H	Drag Key Washer - Octagon	SR3039	1534870	2 (3)	13B	Main Gear Assembly	(VSG312-01)		1
2J	Drag "D" Washer	SR3037	1534868	1	14	Body Assembly	VSG301-01	1564550	1
2K	Spool	VSG021-01	1564543	1	14A	Body Bushing	SR2077-02	1534752	1
2L	Compensation Washer	N/A		1	15	Travers Guide (O/S Slider)	VS2017	1535094	1
2M	Spool Hub	VSB2040-B	1535193	1	16	Internal Teeth Lock Washer	WSLCIT1	1535239	1
2N	Clicker Sub Assembly	SR1058-1	1538523	1	17	Spool Shaft Hex Nut	NTHX1	1534511	1
2P	Flat Socket Head Screw	SCFH2	1534543	1	18	Shim Washer - 0.002	SR2175	1535245	1
3	Rotor Screw	SCFH3	1534544	4		Shim Washer - 0.005	SR2275	1535246	1
4	Rotor Assembly (Kit)	VSG4009-01	1564394	1		Shim Washer - 0.010	SR2375	1535247	1
4A	Bail Assembly	VSG347-01	1564398	1	19	Drive Gear Ball Bearing	BGR02-B	1538484	1
4B	Bail Arm Lever	VSE007-01	1564400	1	20	Body Cover O-Ring	ORR5	1534521	1
4C	Line Roller Screw Washer	VP067-01	1558224	1	21	Body Cover	VSG023-01	1564553	1
4D	Line Roller Screw	LF123-01	1538496	1	22	Body Cover Ball Bearing	BGRS13	1534399	1
4E	Rotor	VSG009-01	1564414	1	23	Body Cup Seal	OSPR12-02	1569455	1
4F	Arm Lever Cap Screw	VR057-01	1535019	2	24	Timing Washer 0.5	VSB035-03	1589945	1
4G	Bail Holder	VSE017-01	1564402	1	25	Timing Washer 0.3	VSB035-02	1589944	1
4H	Arm Lever Cap	VSE113-01	1564403	1	26	Timing Washer 0.1	VSB035-01	1589943	1
4J	Arm Lever Bushing	VR158-01	1535045	2	27	Handle Assembly (Kit)	VSG318-01	1564555	1
4K	Arm Lever Cover Screw	VSE057-01	1564404	2	27A	Handle Hub (Stand)	SR3014B	1534847	1
4L	Arm Lever Cover	VSG046-01	1564415	1	27B	Handle Screw	SCSHC9	1534549	1
4M	Bail Spring Link	VS095-01	1535072	2	27C	Handle Arm	VSG018-01	1564555	1
4N	Bail Spring Spacer	VR048-01	1535014	2	27D	Handle Knob Bolt Nut	SR3031P	1534865	1
4P	Bail Spring	VR022-01	1535002	2	27E	Handle Washer	SR2078	1534753	1
4Q	Bail Spring Pivot	VR095-01	1535032	2	27F	Handle Knob Bushing - Flanged	SR3030	1534864	1
4R	Bail Holder Cover	VSG087-01	1564416	1	27G	Power Grip Handle Knob	VS1208-01	1596760	1
4S	Bail Holder Screw	VSE051-01	1564407	1	27H	Handle Knob Bushing - Plain	SR3029	1534863	1
4T	Bail Holder Cap	VS113-01	1535086	1	27J	Handle Knob Spindle	SR2020	1534745	1
4U	Line Roller Seal	VSD109-01	1564408	1					